

KAISER
MADE IN GERMANY

Copy Stands & Lighting Equipment

for **Image Capturing**
and **Reproduction**

Facts · Specs · Options

Made in Germany

KAISER[®]
FOTOTECHNIK

Many two-dimensional originals and small objects require a special set-up for capturing the image: The camera should look vertically down at the subject. In many cases an accurate, repeatable alignment is indispensable. This can be achieved by using special camera stands – known as copy stands in the "world of photography".

Stand and lighting equipment together with a suitable camera represent a complete solution for these image capturing jobs. The Kaiser range of camera stands and lighting equipment is organized in "system families", within which the individual components are coordinated to harmonize with each other.

When choosing a "suitable" lighting system, you have to take a variety of issues into consideration: dimensions, condition and reflective properties of the subject to be captured as well as the type of camera used and the exposure parameters.

Accessories specially designed for image capturing tasks is often indispensable for efficient working or at least helpful.

In addition various camera accessory gear and general photographic tools can be used.

- Holding devices _____ Page 22, 23
- Transmitted light sources_ Page 28
- Accessories and tools ____ Page 27, 29
- Specifications _____ Page 30, 31



- Professional video camera
- View camera
- Medium-format camera
- (D)SLR/Mirrorless CSC
- Compact camera/Bridge camera
- Industrial camera
- Camcorder

© Kaiser Fototechnik
All rights reserved.

Photography:
Kaiser Fototechnik GmbH & Co. KG
Imago, Wolfram Reiff, Heilbronn
Rudolph + Partner, Heilbronn
MICROBOX GmbH, Bad Nauheim



Contents

R1 System

High flexibility and extraordinary versatility are the outstanding features of the R1 system. A vast range of components and accessories lets you even cope with special tasks.

Page 3

Vertical Stand

This special copy stand for industrial applications features very particular properties.

Page 8



Copylizer

This universal "image capturing tool" comprises a complete reflected/transmitted-light/stand combination.

Page 9



RD System

This professional system offers high stability at still compact dimensions and is also available with a motorized height adjustment.

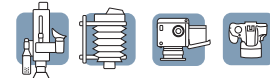
Page 12



rePRO System

This system is uncompromisingly designed for heavy loads and outstanding stability and meets all professional requirements in image capturing. It provides the necessary stability especially for high-resolution medium format cameras, micro scanning systems, optical bench view cameras and TV cameras.

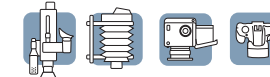
Page 16



Wolfenbüttel Book Reflector 45N

This copy stand is specially designed for digital reproduction of damageable historic books and documents with critical condition, especially for books that cannot be opened for more than 45°.

Page 22



R2 System

A "amateur" system, but also suitable for professional applications using low weight cameras, and that is also available as a mobile version.

Page 24



reprokid

This unit is ideal for all applications where little space and light weight is the issue. Low cost is a welcomed side effect.

Page 26





KAISER R1

**The Universal, Sophisticated,
Flexible, Versatile, Multi-functional,
Adaptable, Modular System**

- For professional users and dedicated photographers.
- High stability, angular precision and quality workmanship
- Ideal for use with camera systems up to 4 kg/8.8 lbs. total weight.
- Vast range of components and accessories.
- Units can be adapted to individual requirements.
- Base boards of various sizes, columns of different height, camera arms with a variety of adjustment options.
- Lighting units with various light sources and housings, working at different power levels, with various mounting and adjustment options.

This system – optimized for adaptability – is completely modularized and therefore allows also customized configurations.



Made in
Germany

3
KAISER
FOTOTECHNIK

KAISER R1 System



Stands

	RSX	RS 10	RS 1	RS 1	RS 1 microdrive
Code number	5512	5513	5510	5511	5507

STAND

Base board

Consists of base board and column with camera arm.
Matt gray, printed fine grid, cm and inch scales ².

Outside dimensions (cm/in.)	60 x 50 / 23.6 x 19.7	60 x 50 / 23.6 x 19.7	45 x 50 / 17.7 x 19.7	45 x 50 / 17.7 x 19.7	45 x 50 / 17.7 x 19.7
Thickness	32 mm / 1.3 in.	32 mm / 1.3 in.	28 mm / 1.1 in.	28 mm / 1.1 in.	28 mm / 1.1 in.
Base with spirit level ⁴	●	●	●	●	●
Height-adjustable feet	●	●	●	●	●

Column

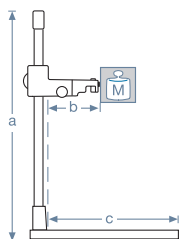
Matt black anodized aluminum section tube, 70 mm/2.8" wide, cm and inch scales, hand crank for height adjustment.

Height	120 cm / 47.2 in.	100 cm / 39.4 in.	100 cm / 39.4 in.	100 cm / 39.4 in.	100 cm / 39.4 in.
Height adjustment with friction drive	–	–	●	●	–
Rack-and-pinion height adjustment	●	●	–	–	●
Counterbalanced	●	●	●	●	●
Fine drive 1:6	–	–	–	–	●
Locking knob	●	●	–	–	●

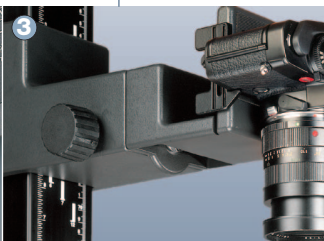
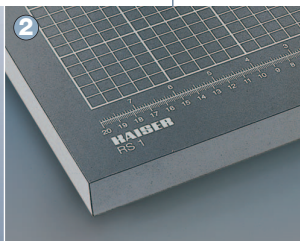
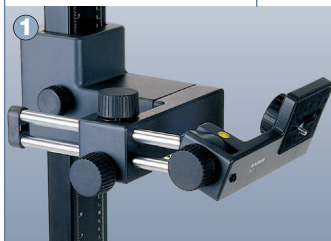
Camera arm

Interchangeable

	RTX ¹	RTP	RA 1	RT 1	RA 1
Type (see page 5)	RTX ¹	RTP	RA 1	RT 1	RA 1
Adjustability	horizontal, tiltable	horizontal	–	horizontal	–
Camera mount	3/8" / 1/4", changeable	3/8" / 1/4", changeable	3/8" / 1/4", changeable	3/8" / 1/4", changeable	3/8" / 1/4", changeable
Camera positioning device ³	–	●	●	–	●
Camera positions	front/rear	front	front	rear vertical/horizontal	front



a	125.5 cm / 49.4 in.	105.5 cm / 41.5 in.	105 cm / 41.3 in.	105 cm / 41.3 in.	105 cm / 41.3 in.
b	18-31cm / 7.1-12.2in.	15.5-23.8cm / 6.1-9.4in.	18.5 cm / 7.3 in.	23-31.8cm / 9.1-12.5 in.	18.7 / 7.4 in.
c	60x43cm / 23.6x16.9in.	60x43cm / 23.6x16.9in.	45x43cm / 17.7x16.9in.	45x43cm / 17.7x16.9in.	45x43cm / 17.7x16.9in.
M	3.5 kg / 7.7 lbs. max.	4 kg / 8.8 lbs. max.	4 kg / 8.8 lbs. max.	3 kg / 6.6 lbs. max.	4 kg / 8.8 lbs. max.



KAISER R1 System

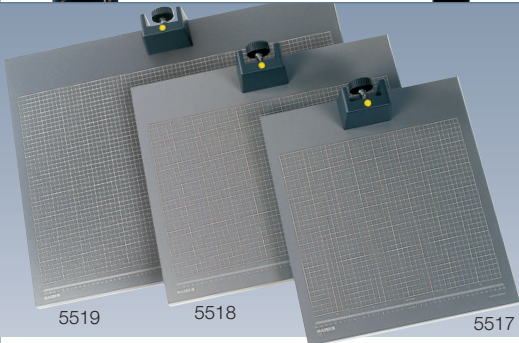
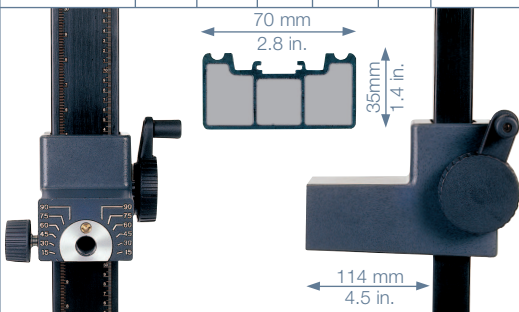
Components + Accessories



Columns

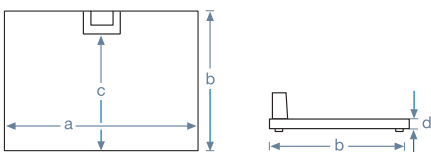
Matt black anodized aluminum section tube, cm and inch scales, height-adjustable holding arm (4478 equipped with 2 holding arms) with hand crank, pivotal mount for camera arms.

	Height	Friction	Rack-and-pinion	Counterbalanced on upper holding arm	Blocking screw	Fine drive
4409	1.5 m	●	-	●	●	-
4408	1.2 m	-	●	●	●	-
4478	1 m	-	●	●*	●	-
4475	1 m	-	●	●	●	1:6
4476	1 m	-	●	●	●	-
4474	1 m	●	-	●	-	-
4407	0.8 m	-	●	●	●	1:6



Base Boards

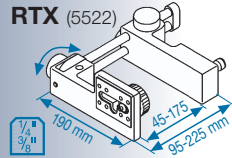
Matt gray, fine grid, cm/inch scale, individually height-adjustable feet, base made of cast aluminum, with spirit level.



	a	b	c	d
5519	80 cm 31.5 in.	60 cm 23.6 in.	53 cm 20.9 in.	32 mm 1.3 in.
5518	60 cm 23.6 in.	50 cm 19.7 in.	43 cm 16.9 in.	32 mm 1.3 in.
5517	45 cm 17.7 in.	50 cm 19.7 in.	43 cm 16.9 in.	28 mm 1.1 in.

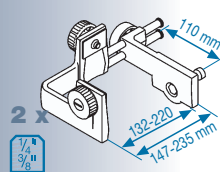
Camera Arms

RTX (5522)



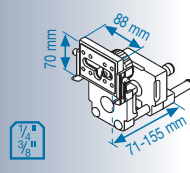
- Horizontally adjustable via parallel guides with fine drive
- Mounting plate turns +/- 90°
- Spirit level
- Camera mounts on front/rear

RT 1 (5521)



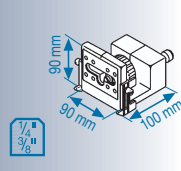
- Horizontally adjustable via parallel guides
- Two mounting positions for horizontal and vertical format
- Arm tiltable

RTP (5524)



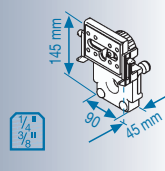
- Horizontally adjustable via parallel guides
- Camera positioning device

RA 1 (5520)



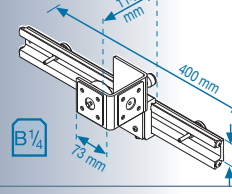
- Camera positioning device

RA 101 (5523)



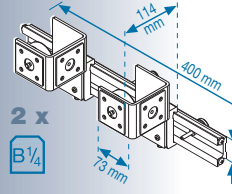
- For camera with greater distance between tripod mount and optical axis
- Camera positioning device

RLR (5539)



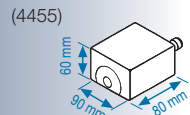
- Camera platform can be shifted horizontally to left or right
- Adjustable stops for end position
- Camera can be mounted for horiz. or vertical formats

2CC (5540)



- Two camera platforms can be shifted horizontally to left or right
- For carrying two cameras simultaneously, e.g. for comparison shots

Extension Arm (4455)



Extends the holding arm of the column by 8 cm / 3.1 in.

Wall Mount

For R1 system columns. Top section adjustable for vertical position. Lower part with base and spirit level. Distance between wall and holding arm front (no camera arm attached): approx. 25 cm / 9.8 in.



Table Frame

For all stands and base boards of the R1 system. Height-adjustable feet. Slide-in compartment for control box for lighting units.



WxHxD: 58 x 51 x 60 cm
(22.8 x 20.1 x 23.6 in.)

75H Base Stand

For rePRO, RD and R1 system columns, base board 5616 or trans-illuminator 5617.



88 x 75 x 78 cm
(34.6 x 29.5 x 30.7 in.)

Column Base

For mounting an R1 column on a 75H base stand, copy table, on a 5630 table frame or on table and work plates.



Extraneous Light Protector

For R1 and Copylizer systems. Light-tight tent made of black, teflon-coated fabric. Front zipper.

Holding support 85 x 80 cm (33.5 x 31.5 in.) fits on 1 m (39.4 in.) and 1.2 m (47.2 in.) columns.

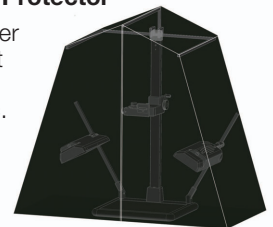


Table Frame

92 x 31 x 68 cm (36.2 x 12.2 x 26.8 in.), see also page 20

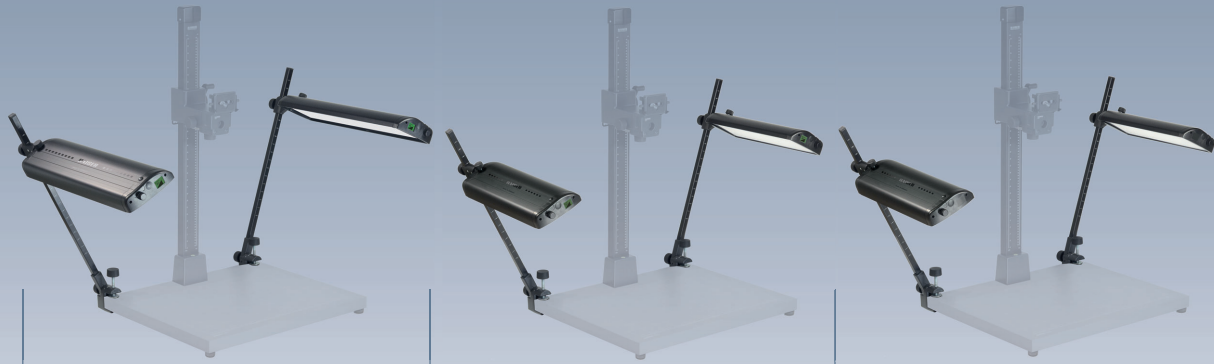


Copy Table

92 x 49 x 68 cm (36.2 x 19.3 x 26.8 in.), see also page 20



KAISER R1 System



Lights

RB 560 AL

RB 555 AS

RB 551 AB

Code number

5640

5547

5545

LIGHTING UNIT

Consisting of two LED lights with vertical arms.
Lights can be swiveled, adjusted in height and shifted horizontally.

Panel lights for even illumination. Solid aluminum section ②.

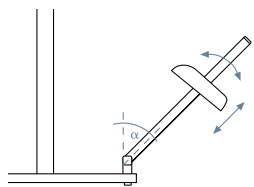
Lights

	RB 560 AL	RB 555 AS	RB 551 AB
Light source	2 x 272 SMD LEDs	2 x 192 SMD LEDs	2 x 192 SMD LEDs
Thermo-management	●	●	-
Color temperature	5600 Kelvin	5600 Kelvin	5600 Kelvin
Color rendition index	CRI = 96	CRI = 96	CRI = 96
Angle of radiation	100°	100°	100°
Illumination with/without diffuser*	6800 / 8000 lux	4600 / 5200 lux	4600 / 5200 lux
Light emitting areas	58 x 16.5 cm / 22.8 x 6.5 in.	39 x 16.5 cm / 15.4 x 6.5 in.	39 x 16.5 cm / 15.4 x 6.5 in.
Power consumption	2 x ≤ 40 W	2 x ≤ 28 W	2 x ≤ 28 W
Lights dimmable individually / jointly	● / ●	● / ●	● / -
Illuminated display	●	●	-
Detachable diffuser	●	●	●
Polarizers ③	as an accessory (5641)	as an accessory (5548)	as an accessory (5548)

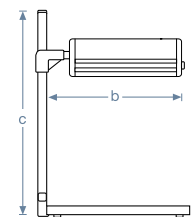
Vertical arms

Steel tube with square cross section. With scale ⑤. Tilt/angle adjustable by lock joint ①.
Mounted with clamp holders ① to boards up to 48 mm / 1.9 in. thick.

Edge dimension	RB 560 AL	RB 555 AS	RB 551 AB
	20 mm / 0.8 in.	20 mm / 0.8 in.	20 mm / 0.8 in.



	RB 560 AL	RB 555 AS	RB 551 AB
α	0 - 90°	0 - 90°	0 - 90°
b	68.5 - 83 cm / 27 - 32.7 in.	51.5 - 66 cm / 20.3 - 26 in.	51.5 - 66 cm / 20.3 - 26 in.
c	76 cm / 30 in.	76 cm / 30 in.	76 cm / 30 in.

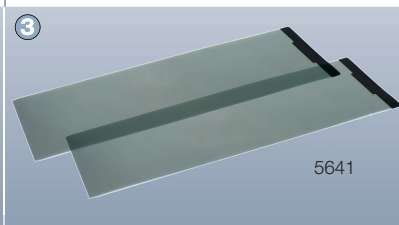
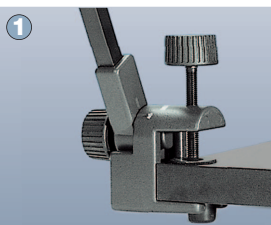


Thermo-Management

The thermo-management ensures that the adjusted brightness as well as the color temperature always remain constant, regardless of the room and unit temperature and thus absolutely reproducible results can be achieved.

Without thermo-management, both brightness and color temperature would change slightly as the temperature changes. For example, when the LEDs heat up during operation (because light-emitting diodes convert a part of the input energy into heat, just like other light sources) or because the ambient temperature is normally not always constant.

This thermo-management includes both **sensor-controlled temperature monitoring with dynamic compensation control** and **elaborate passive cooling** via LED board and aluminum housing.





Lights

RB 5070 DX2

RB 5970 UV

5550

5596

Code number

Consisting of two LED lights with vertical arms.
Lights can be swiveled and adjusted in height.

LIGHTING UNIT

Panel lights for even illumination. Sturdy plastic housing.

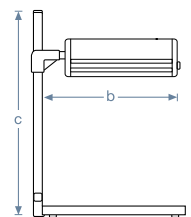
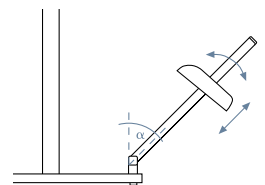
Lights

2 x 161 High-CRI LEDs		2 x 12 UV-A LEDs		Light source
-	-	-	-	Thermo-management
6000 Kelvin	-	365 nm wave length ⑥	-	Color temperature
CRI > 93	-	-	-	Color rendition index
110°	-	100°	-	Angle of radiation
2400 / 3000 lux	-	-	-	Illumination with/without diffuser*
33 x 8.5 cm / 13 x 3.3 in.	-	33 x 8.5 cm / 13 x 3.3 in.	-	Light emitting areas
2 x 27 W	-	2 x 9 W	-	Power consumption
● / ●	-	● / -	-	④ Lights dimmable individually / jointly
-	-	-	-	Illuminated display
●	-	-	-	Detachable diffuser
-	-	-	-	Polarizers

Steel tube with square cross section. With scale ⑤. Tilt/angle adjustable by lock joint ①.
Mounted with clamp holders ① to boards up to 48 mm / 1.9 in. thick.

Vertical arms

20 mm / 0.8 in.		20 mm / 0.8 in.		Edge dimension
0 - 90°	-	0 - 90°	-	α
54 cm / 21.3 in.	-	54 cm / 21.3 in.	-	b
76 cm / 30 in.	-	76 cm / 30 in.	-	c



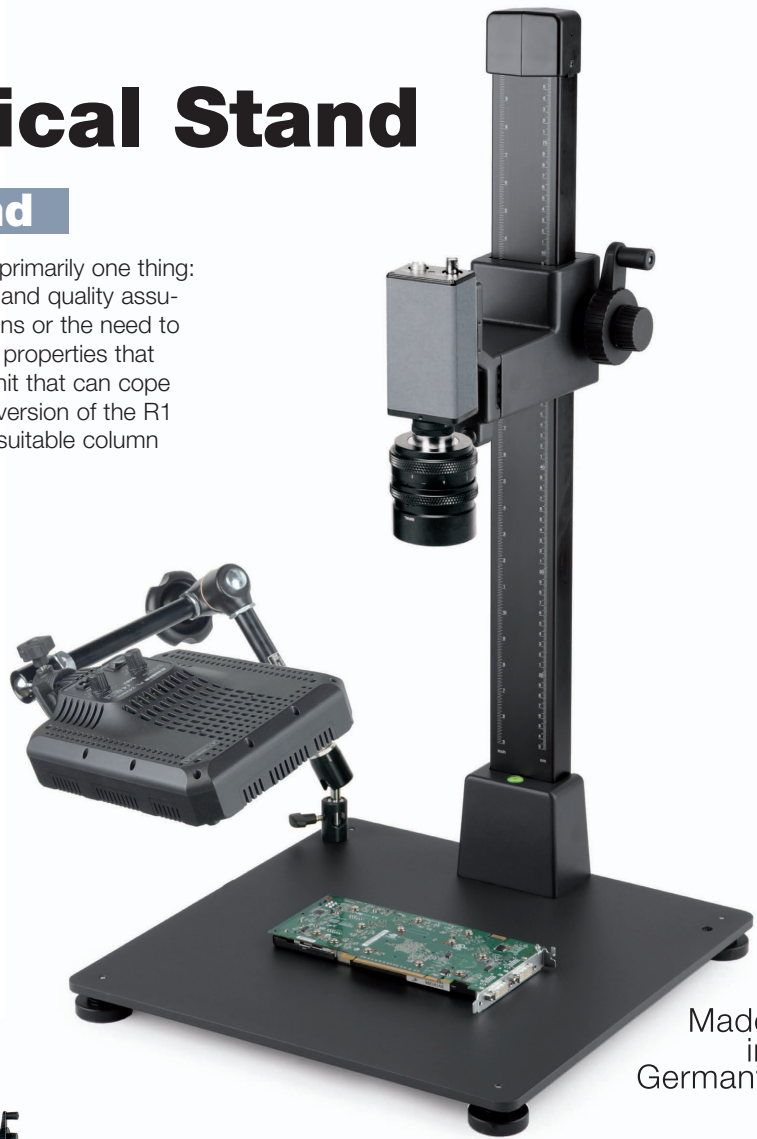
* Based on uniform illumination of a 16.5 x 11.5 in. flat subject.



KAISER Vertical Stand

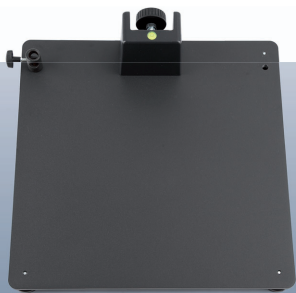
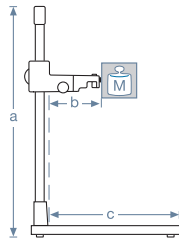
The Special Copy Stand

Some working environments and applications require primarily one thing: robustness. Testing stations in manufacturing, design and quality assurance in industrial production, special climatic conditions or the need to adapt additional equipment sometimes require device properties that exceed the usual standards. The Vertical Stand is a unit that can cope with these requirements. It is kind of a "Heavy Metal" version of the R1 system stand with a 8 mm thick metal base board, a suitable column and camera arm.



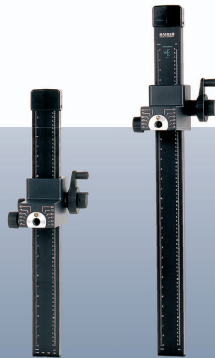
Made in Germany

	with 4407	with 4475
a	83 cm (32.7 in.)	103 cm (40.6 in.)
b	13 cm (5.1 in.)	13 cm (5.1 in.)
c	38 cm (15 in.)	38 cm (15 in.)
M	4 kg (8.8 lbs.)	4 kg (8.8 lbs.)



Metal Base Plate
5504

Dark gray finished steel plate with die-cast base for 4407, 4475 or other R1 system columns. Receptacle for accessories (e.g. 5040) with 16 mm (0.6 in.) standard spigot, mounts on right or left side. Height adjustable feet. Dimensions (WxD): 45 x 45 cm (17.7 x 17.7 in.), thickness of plate: 8 mm (0.3 in.), weight: approx. 13.5 kg (29.7 lbs.).



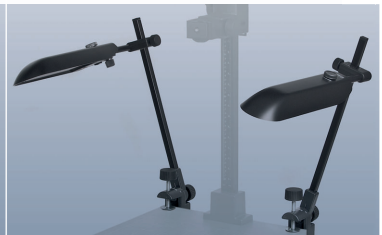
Column
4407 / 4475

Wide and extremely vibration-resistant column of aluminium tubing with dull black anodized surface and cm and inch scales. With mount and fastening mechanism for camera arms. Height adjustment by hand crank and gear rack, additional 1:6 fine drive. Weight compensation by built-in roller spring. Locking screw for fixing height adjustment. Cross section approx. 70 x 35 mm (2.8 x 1.4 in.).
4407: Height 80 cm (31.5 in.)
4475: Height 100 cm (39.4 in.)
Suitable camera arms: RA 101 (5523) or other R1 system camera arms (see page 5).



PL 24Vario LED Desktop Light (3482)

Panel light with 240 SMD LEDs, variable color temperature 3200 - 5600 Kelvin, CRI: 97, angle of radiation 80°, continuously dimmable. Specially structured diffuser screen. Mounting on height-adjustable desktop stand (incl.) or on stands and fixtures with 16 mm (5/8") standard spigot, such as Magic Arm 5040.



RB 5020 DS2 LED Lighting Unit (5467)

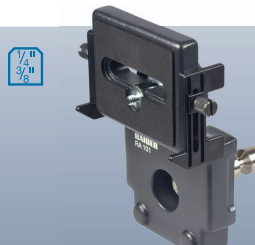
Two panel lights with 105 SMD LEDs each, approx. 6000 Kelvin, CRI > 93, angle of radiation 110°, separately dimmable or in conjunction. Lights can be tilted, swiveled and adjusted in height. Vertical arms 50 cm (19.7 in.), edge dimension 16 mm, with clamp base, tiltable.

RA 101 Camera Arm
5523

See page 5 for description.

"Magic Arm" Hinged Bracket
5040

See page 23 for description.



KAISER



”exe.cutive LED“ Copylizer

The Complete Reflected/Transmitted-Light/Stand Combination

- For photographic capturing and documentation of subjects of any kind, including three-dimensional subjects.
- For capturing documents, logos, symbols, photos and drawings for further processing in DTP systems or for further use in video conferences or networks.
- For reproducing and documenting X-ray films, large format slides, silhouetted subjects and transparent objects.
- As a video presenter in schools and universities, at training courses and meetings, in advertising, industry, medical imaging and for use by public authorities.
- For integration into evaluation systems for quality testing and monitoring in industry labs.

Everywhere in industry and administration, in medicine, science and research, in the entire area of communication and information technologies, where photos and other originals have to be copied, catalogued, archived or transformed, there is one thing you need apart from the camera system of your own choice: a Kaiser Copylizer. It provides reliable camera mounting and suitable lighting when reproducing and documenting.

The stand can be used either with or without dedicated side lighting units, for which the stand is equipped with suitable mounting provisions.



Made
in
Germany

KAISER
FOTOTECHNIK



Stand

Copylizer exe.cutive LED	
Code number	5215
STAND	Consisting of illumina base plate and column with camera arm.
Illumina base	Integrated transmitted light source with daylight SMD LEDs, cm and inch scales, height-adjustable feet. ①
■ Outer dimensions	63 x 55 cm / 24.8 x 21.7 in.
■ Serviceable illuminated area	50.6 x 36 cm / 19.9 x 14.2 in. (> tabloid format)
■ Light source	270 SMD LEDs, 6000 Kelvin, CRI = 95
■ cd/m ² on illuminated surface	8300
■ Flicker-free	●
■ Dimmable	●
■ Base with spirit level	●
■ Optional accessories	Surface lighting units, pressure plate, made of crystal glass (5292), metal plate (5294)
Column	Made of special aluminum tubing. High stability, vibration-resistant. 70 mm/2.8" wide. cm and inch scales. Holding arm made of cast aluminum. Hand crank for height adjustment.
■ Height	100 cm / 39.4 in.
■ Height adjustment with weight compensation	●
Camera arm	Type RTP (5524) ②, detachable/interchangeable
■ Adjustability	horizontal
■ Camera mount	1/4" / 3/8", interchangeable
■ Camera positioning device	●

Components + Accessories



5244

The **exe.cutive LED Illumina Base Plate** can be equipped with the columns and camera arms from the Kaiser R1 system (see page 5). Side lighting units can be attached directly. Includes socket and height-adjustable feet. Serviceable illuminated area 50.6 x 36 cm (19.9 x 14.2 in.).



5292

Pressure Plate

Made of high-quality crystal glass, for "wavy" originals and as a protection for the acrylic glass plate. Can be fitted to the hinge ③ of the illumina base plate and is easily lifted. With adjustable stop guides.

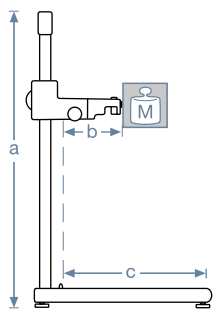


5294

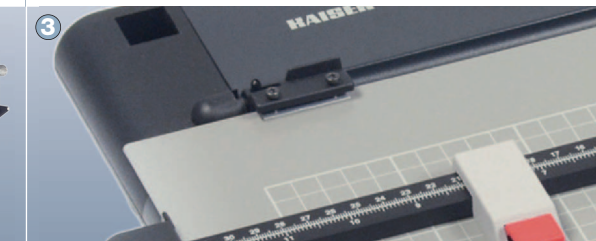
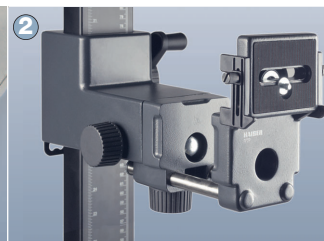
Metal Plate

With adjustable stop guides and four round magnets for holding the original. Can be fitted to the hinge ③ of the illumina base plate and can easily be lifted. With printed grid for positioning.

Serves also as a protective cover for the acrylic glass plate.



a	106 cm / 41.7 in.
b	13.5 - 21.8 cm / 5.3 - 8.6 in.
c	59 x 43 cm / 23.2 x 16.9 in.
M	4 kg / 8.8 lbs. max.



Lighting Units



RB 525 AS

RB 521 AB

RB 5270 DX

5284

5282

5278

Code number

Consisting of two LED lights with vertical arms.

Lights can be swiveled and adjusted in height. 5284 and 5282 can also be shifted horizontally. ⑥

Panel lights for even illumination. Solid aluminum section (5284, 5282) ⑥ or sturdy plastic housing (5278).

LIGHTING UNIT

Lights

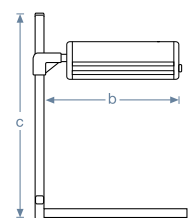
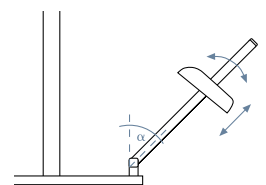
2 x 192 SMD LEDs	2 x 192 SMD LEDs	2 x 161 High-CRI LEDs	Light source
●	-	-	Thermo-management*
5600 Kelvin	5600 Kelvin	6000 Kelvin	Color temperature
CRI = 96	CRI = 96	CRI > 93	Color rendition index
100°	100°	110°	Angle of radiation
4600 / 5200 lux	4600 / 5200 lux	2400 / 3000 lux	Illumination with/without diffuser**
39 x 16.5 cm / 15.4 x 6.5 in.	39 x 16.5 cm / 15.4 x 6.5 in.	33 x 8.5 cm / 13 x 3.3 in.	Light emitting areas
2 x ≤ 28 W	2 x ≤ 28 W	2 x 27 W	Power consumption
● / ●	● / -	● / ●	Lights dimmable individually / jointly
●	-	-	Illuminated display ⑤
●	●	●	Detachable diffuser
as an accessory (5548)	as an accessory (5548)	-	Polarizers

Steel tube with square cross section. With scale. Tilt/angle adjustable by lock joint. ④

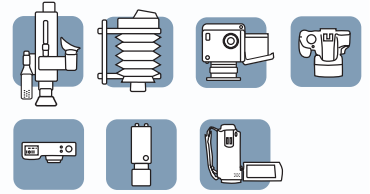
Mounted in designated fixtures on Copylizer base plate. ④

Vertical arms

20 mm / 0.8 in.	20 mm / 0.8 in.	20 mm / 0.8 in.	Edge dimension
			* See page 6 for description.
			** Based on uniform illumination of a 16.5 x 11.5 in. flat subject.
0 - 90°	0 - 90°	0 - 90°	
51.5 - 66 cm / 20.3 - 26 in.	51.5 - 66 cm / 20.3 - 26 in.	54 cm / 21.3 in.	
76 cm / 30 in.	76 cm / 30 in.	76 cm / 30 in.	



KAISER D-Class



RD System: The Pro Copy Stand

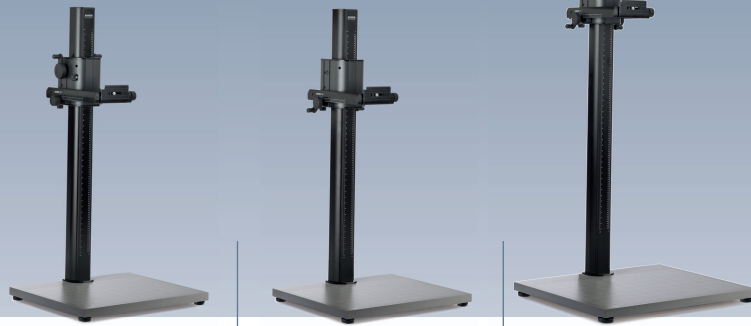
The state-of-the-art copy system for digital image capturing:

- Stands with high convenience properties and outstanding stability characteristics.
- LED lighting units for steady high quality light.
- For professional users in industry, administration, research and education.
- For all image capturing tasks requiring high professional demand.

Made
in
Germany

Components + Accessories

Stands



RSD 1.2

RSDmot 1.2

RSDmot 1.8

Code number

5602

5603

5600

STAND

Base board

Consists of base board and column with camera arm.

Matt gray, printed fine grid, cm and inch scales.

Outside dimensions

68x57cm/26.8x22.4in.

68x57cm/26.8x22.4in.

90x73cm/35.4x28.7in.

Thickness

38 mm / 1.5 in.

38 mm / 1.5 in.

38 mm / 1.5 in.

Base with spirit level

●

●

●

Height-adjustable feet

●

●

●

Column

Matt black anodised aluminium multi-section tube, 105 x 74 mm (4.1 x 2.9 in.), with cm and inch scales

Height

120 cm / 47.2 in.

120 cm / 47.2 in.

180 cm / 70.9 in.

Rack-and-pinion height adjustment, counterbalanced, with blocking screw

●

–

–

Motorized height adjustment with two speeds

–

●

●

Camera arm

Aluminium section tube, rack-and-pinion parallel guides, spirit level

Adjustability

horizontal

horizontal

horizontal

Blocking screws

●

●

●

Tiltable mounting plate

± 90°

± 90°

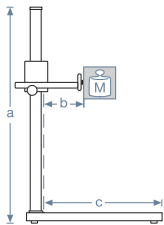
± 90°

Camera mount

3/8" / 1/4", changeable

3/8" / 1/4", changeable

3/8" / 1/4", changeable



a

127 cm / 50 in.

127 cm / 50 in.

187 cm / 73.6 in.

b

6-22 cm / 2.4-8.7 in.

6-22 cm / 2.4-8.7 in.

6-31 cm / 2.4-12.2 in.

c

47 cm / 18.5 in.

47 cm / 18.5 in.

63 cm / 24.8 in.

M

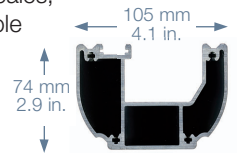
8 kg / 17.6 lbs. max.

8 kg / 17.6 lbs. max.

8 kg / 17.6 lbs. max.

RD Columns

Aluminum section tube, cm and inch scales, height adjustable camera arm.



	Height	Adjustment
5622	1.2 m	manual
5623	1.2 m	motorized
5620	1.8 m	motorized



5622

5623

5620

RD Wall Mount

For wall mounting of a RD column. Lower part with base, spirit level and compartment for power supply. Top section adjustable for vertical column positioning.

Distance wall - column: approx. 36.5 cm (14.4 in.)



5624



Base Board (5616) and Trans-Illuminator (5617). For insertion into the base stand 75H (5618).

Base Stand 75H



5618

Heavy-duty. For mounting RD columns with base 5625. 88 x 75 x 78 cm (34.6 x 29.5 x 30.7 in.)

Copy Table



5712

Wheeled base stand for mounting an RD column. Dimensions (WxHxD): 92 x 49 x 68 cm (36.2 x 19.3 x 26.8 in.)

Table Frame



5630

Low copy table with matt-grey base board. Height: 31 cm (12.2 in.) with casters, 25 cm (9.8 in.) with feet.

Column Base

For mounting a RD column on a base stand 75H (5618), copy table (5712), table frame (5630) or on table and work plates.



5625

Base Stand

For converting RSD 1.2 (5602) and RSDmot 1.2 (5603) copy stands from table to free-standing model. 58 x 51 x 60 cm (22.8 x 20.1 x 23.6 in.)



5508

KAISER RD System



Lights

RB 560 AL **RB 570 AX** **RB 555 AS** **RB 551 AB**

Code number 5640 5652 5547 5545

LIGHTING UNIT

Consisting of two LED lights with vertical arms.
Lights can be swiveled, adjusted in height and shifted horizontally.

Lights

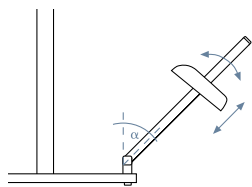
Panel lights for even illumination. Solid aluminum section ②.

	RB 560 AL	RB 570 AX	RB 555 AS	RB 551 AB
Light source	2 x 272 SMD LEDs	2 x 192 SMD LEDs	2 x 192 SMD LEDs	2 x 192 SMD LEDs
Thermo-management	●	●	●	—
Color temperature	5600 Kelvin	5600 Kelvin	5600 Kelvin	5600 Kelvin
Color rendition index	CRI = 96	CRI = 96	CRI = 96	CRI = 96
Angle of radiation	100°	100°	100°	100°
Illumination with/without diffuser*	6800 / 8000 lux	4600 / 5200 lux	4600 / 5200 lux	4600 / 5200 lux
Light emitting areas	58 x 16.5 cm / 22.8 x 6.5 in.	39 x 16.5 cm / 15.4 x 6.5 in.	39 x 16.5 cm / 15.4 x 6.5 in.	39 x 16.5 cm / 15.4 x 6.5 in.
Power consumption	2 x ≤ 40 W	2 x ≤ 28 W	2 x ≤ 28 W	2 x ≤ 28 W
Lights dimmable individually / jointly	● / ●	● / ●	● / ●	● / —
Illuminated display	●	●	●	—
Detachable diffuser	●	●	●	●
Polarizers ③	as an accessory (5641)	as an accessory (5548)	as an accessory (5548)	as an accessory (5548)

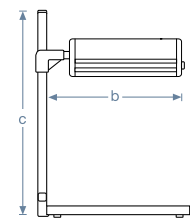
Vertical arms

Steel tube with square cross section. With scale ⑤. Tilt/angle adjustable by lock joint ①.
Mounted with clamp holders ① to boards up to 48 mm / 1.9 in. thick (5652: up to 55 mm / 2.2 in.).

Edge dimension 20 mm / 0.8 in. 25 mm / 1 in. 20 mm / 0.8 in. 20 mm / 0.8 in.



	RB 560 AL	RB 570 AX	RB 555 AS	RB 551 AB
α	0 - 90°	0 - 90°	0 - 90°	0 - 90°
b	68.5 - 83 cm / 27 - 32.7 in.	51.5 - 66 cm / 20.3 - 26 in.	51.5 - 66 cm / 20.3 - 26 in.	51.5 - 66 cm / 20.3 - 26 in.
c	76 cm / 30 in.	87 cm / 34.3 in.	76 cm / 30 in.	76 cm / 30 in.

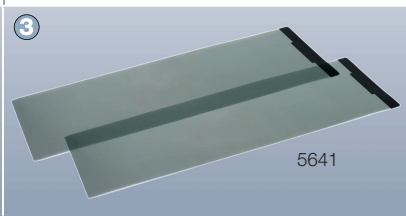
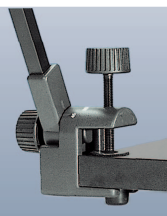


Thermo-Management

The thermo-management ensures that the adjusted brightness as well as the color temperature always remain constant, regardless of the room and unit temperature and thus absolutely reproducible results can be achieved.

Without thermo-management, both brightness and color temperature would change slightly as the temperature changes. For example, when the LEDs heat up during operation (because light-emitting diodes convert a part of the input energy into heat, just like other light sources) or because the ambient temperature is normally not always constant.

This thermo-management includes both **sensor-controlled temperature monitoring with dynamic compensation control** and **elaborate passive cooling** via LED board and aluminum housing.



Lights



RB 100D ④	RB 5070 DX2	RB 5970 UV
5648	5550	5596

Code number

Consisting of two LED lights with vertical arms.
Lights can be swiveled and adjusted in height.

LIGHTING UNIT

Panel lights for even illumination. Sturdy plastic housing.

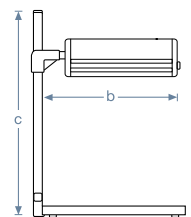
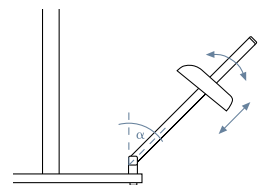
Lights

2 x 504 High-CRI LEDs	2 x 161 High-CRI LEDs	2 x 12 UV-A LEDs	Light source
-	-	-	Thermo-management
5600 Kelvin	6000 Kelvin	365 nm wave length ⑥	Color temperature
CRI ≥ 95	CRI > 93	-	Color rendition index
85°	110°	100°	Angle of radiation
11000 / - lux	2400 / 3000 lux	-	Illumination with/without diffuser*
51 x 36 cm / 20.1 x 14.2 in.	33 x 8.5 cm	33 x 8.5 cm	Light emitting areas
2 x 100 W	2 x 27 W	2 x 9 W	Power consumption
● / -	● / ●	● / -	Lights dimmable individually / jointly
-	-	-	Illuminated display
built-in diffuser	●	-	Detachable diffuser
-	-	-	Polarizers

Steel tube with square cross section. With scale ⑤. Tilt/angle adjustable by lock joint ①.
Mounted with clamp holders ① to boards up to 48 mm / 1.9 in. thick (5648: up to 55 mm / 2.2 in.).

Vertical arms

25 mm / 1 in.	20 mm / 0.8 in.	20 mm / 0.8 in.	Edge dimension
0 - 90°	0 - 90°	0 - 90°	α
74.5 cm / 29.3 in.	54 cm / 21.3 in.	54 cm / 21.3 in.	b
87 cm / 34.3 in.	76 cm / 30 in.	76 cm / 30 in.	c



* Based on uniform illumination of a 16.5 x 11.5 in. flat subject.



KAISER
RSP 1.5



5612 with 5615, 5616 and 5652

KAISER
RSP Xtra

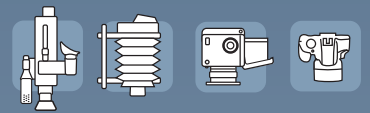


5711 with 5712 and 5648

KAISER
RSP 2motion



5710
with
5652



KAISER rePRO

The System for Highest Professional Requirements

When you need a maximum in stability, solidity and load capacity, the Kaiser rePRO system is the right choice. This system is not only at home in photo and video studios, but also in technology, forensics and science, education, research and media production. Because of its extremely high level of stability the rePRO system is especially suitable to capture large format reflective or transparent originals. This modular-designed stand is available in several versions: with a table with fixed working height, with a motorized height-adjustable table and without a table. According to the job, the table with fixed working height can be equipped with a large base plate or with a trans-illuminator for translucent originals.

The positioning of the camera level is motorized throughout the entire column height either by cable remote control or, with some versions, computerized via PC/laptop using the Kaiser autoDrive program. With this program, height positions can be stored and retrieved with approx. 1/100 millimeter repeat accuracy and the brightness of the RB 570 AX LED lighting unit can be controlled.

The version with height-adjustable table has a motorized table and a motorized camera carrier that can be moved along the complete height of the column. This offers enormous flexibility with respect to shooting distance and possible working positions. The version without a table provides for a different sort of flexibility, because it can be combined with various existing working planes.

For precise positioning of the optical axis of the camera, the camera carrier can be shifted horizontally via parallel guides with gear rack and, in addition, can be tilted by $\pm 90^\circ$ with high-precision fine adjustment. The column, made of a multi-section special extrusion, is mounted to a firmly attached cast base and is extremely sturdy and vibration-resistant.

These professional work stations - equipped with a suitable camera system of your choice and one of the RB 570 AX or RB 100D lighting units - offer optimum conditions for sophisticated image capturing tasks.

Made
in
Germany





KAISER *autoDrive*

Copy Stands with Automatic Height Adjustment

With the RSP 1.5 autoDrive and RSP Xtra autoDrive copy stands height is adjusted via a **cable remote control** that can easily store four height positions and retrieve them at the touch of a button. As an alternative you may install the **Kaiser autoDrive program** on your PC or laptop for height adjustment and brightness control of the RB 570 AX LED lighting unit.

Kaiser autoDrive Control Program

- Application: computer-controlled height adjustment for certain copy stands and columns, brightness control for certain LED lighting units
- Direct access height adjustment via scroll bar, different speed rates
- Pre-selected height adjustment plus preset brightness level by selecting a predefined project (target position, description of the project and, if needed, the brightness settings)
- 1/100 millimeter repeat accuracy
- Separate brightness control of left and right light
- Largely intuitive user interface, clearly laid out menus and explanatory texts (can be switched off)
- Projects can be saved, retrieved, newly created, copied, edited and deleted. Max. 500 projects, list can be sorted
- Multiple input fields for project description, e.g. camera, lens, focal length, template size. For reproducible results
- Event log to display drive status, etc.

- Position adjustment in millimeters, inches or pulses
- Language selectable: German or English
- Emergency stop via program, space bar on the computer keyboard or cable remote control
- System requirements: Win 2000, Win XP, Win 7, Win 8.1, Win 10, Win 11

Made
in
Germany



5613 with 5618, 5610,
5617 and 5652

RSP 1.5 Components



	RSP autoDrive 1.5	RSP 1.5
Code number	5613	5612
COLUMN	Column with camera carrier, cable remote control, control unit and control program	Column with camera carrier and cable remote control
Column	Multi chamber aluminum section, matt black anodized, printed cm and inch scales	
■ Height	150 cm / 59 in.	150 cm / 59 in.
■ Cross section	120 x 80 mm / 4.7 x 3.1 in.	120 x 80 mm / 4.7 x 3.1 in.
Height adjustment camera carrier		
■ Motorized	●	●
■ Cable remote control	2 travel speeds, memory buttons for 4 height positions	2 travel speeds
■ Via PC/laptop	with Kaiser autoDrive control program	-
■ Drive via worm-gear	self-limiting	self-limiting
■ Adjustment speed	constant, independent of load	constant, independent of load
■ Automatic end switch	●	●
Camera Carrier	Cast aluminum, horizontally adjustable via parallel guides with gear rack, camera mounting plate 13 x 13 cm / 5.1 x 5.1 in., tiltable ± 90° by high-precision fine adjustment	
■ Right-/left-hand operation	●	●
■ Position lockable	●	●
■ Mounting thread	1/4" / 3/8", interchangeable	1/4" / 3/8", interchangeable
■ Spirit level	●	●

Trans-Illuminator

For insertion into the Table Frame (5615) and the Base Stand 75H (5618)

Working area:
80 x 60 cm / 31.5 x 23.6 in.

Illuminated area:
48 x 43 cm / 18.9 x 16.9 in.

Glass plate

Lamps: 4 x 55 W compact fluorescent lamps

Color temperature: 5400 K, CRI=90-100

Average service life: 8,000 hours

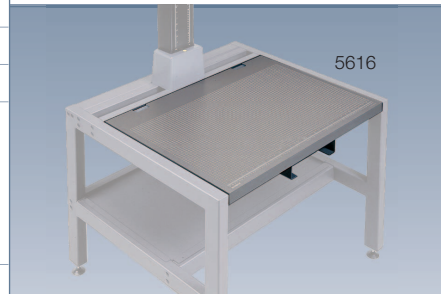
Continuously dimmable

Fan cooling, no thermal load on originals.

Luminance: 6,700 cd/m²

Uniformity: 85%

High-frequency operation



Base Board

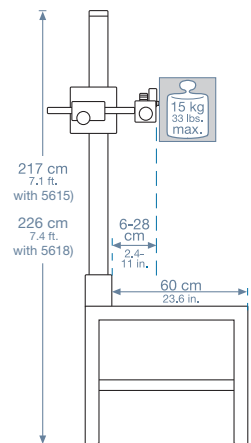
For insertion into the Table Frame (5615) and the Base Stand 75H (5618)

Dimensions (WxD): 80 x 60 cm / 31.5 x 23.6 in.

Thickness: 38 mm / 1.5 in.

Specification: High-compressed wooden material, all-side plastic-laminated, printed grid and cm/inch scales

Includes slide-in carrier for control box of optional lighting unit



Wall Mount

For mounting a RSP column (e.g. 5612, 5613) to a wall. Lower part with base, spirit level and compartment for power-supply.

Top section adjustable.

Distance wall - column: approx. 35 cm (13.8 in.)



75H Base Stand

Height approx. 75 cm (29.5 in.), allows convenient working in a sitting or standing position.

Welded tubular steel construction, sturdy and heavy-duty.

Base 5610 is required for mounting a column 5612 or 5613.

88 x 75 x 78 cm (34.6 x 29.5 x 30.7 in.)

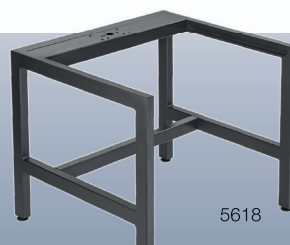


Table Frame

For columns 5612 and 5613. Incl. base. Sturdy steel tube construction, demountable.

With stacking tray 79.5 x 49 cm (31.3 x 19.3 in.)

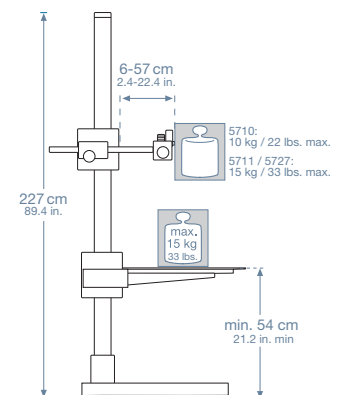
Dimensions without base (WxHxD): 88 x 66 x 78 cm (34.6 x 26 x 30.7 in.)

Required floor space (WxD): 88 x 104 cm (34.6 x 41 in.)

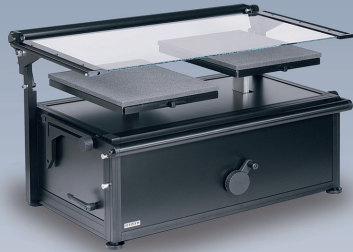


Stands

RSP Xtra	RSP Xtra autoDrive	RSP 2motion	
5711	5727	5710	Code number
Column with camera carrier, cable remote control and column foot	Column with camera carrier, cable remote control, control unit, control program and column foot	Column with camera carrier, cable remote control, column foot and base board	STAND
Multi chamber aluminum section, matt black anodized, printed cm and inch scales			Column
216 cm / 85 in.	216 cm / 85 in.	216 cm / 85 in.	Height
120 x 80 mm / 4.7 x 3.1 in.	120 x 80 mm / 4.7 x 3.1 in.	120 x 80 mm / 4.7 x 3.1 in.	Cross section
Height adjustment camera carrier			
●	●	●	Motorized
2 travel speeds	2 travel speeds, memory buttons for 4 height positions ②	2 travel speeds	Cable remote control
-	with Kaiser autoDrive control program	-	Via PC/laptop
self-limiting	self-limiting	self-limiting	Drive via worm-gear
constant, independent of load	constant, independent of load	constant, independent of load	Adjustment speed
●	●	●	Automatic end switch
●	●	●	Anti-collision device
Height adjustment base board			
-	-	●	Motorized
-	-	2 travel speeds	Cable remote control
-	-	self-limiting	Drive via worm-gear
-	-	●	Automatic end switch
-	-	●	Anti-collision device
-	-	160 cm / 63 in.	Max. working span
Cast aluminum, horizontally adjustable via parallel guides with gear rack ③ right-/left-hand operation, position lockable, camera mounting plate 13 x 13 cm / 5.1 x 5.1 in., tiltable ± 90° by high-precision fine adjustment ① 1/4"/3/8", interchangeable mounting thread, built-in spirit level			Camera Carrier
(to be used with copy table 5712, table 5630 or existing tables)		steel panel with stabilizing substructure 129 x 89 cm / 50.8 x 35 in.	Base Board Dimensions
Double strutted steel tube			Column Foot
●	●	●	Cast column socket
●	●	●	Height-adjustable feet
83 x 140 cm / 32.7 x 55.1 in.	83 x 140 cm / 32.7 x 55.1 in.	129 x 164 cm / 64.6 in.	Required floor space



Accessories + Components



Book Cradle 45/30

Table Frame

Table for Copying Works

Code number

5631

5630

5712



- For books with open sizes up to 73 x 45 cm (28.7 x 17.7 in.) and a thickness of 15 cm (5.9 in.)
- Pressure plate made of 6 mm thick float glass
- Antireflection coating on both sides
- Lockable
- Locates automatically in opening position
- Platforms 30x45 cm (11.8x17.7 in.) each
- With foam-padding
- Adjustable space for spines of different sizes
- Height of platforms adjustable
- Automatic pressure control
- Quick pressure release and subsequent resetting with previous pressure
- Fold-out support bracket to hold large-sized books
- Dimensions (WxHxD): 86 x 55.5 x 65 cm (33.9 x 21.9 x 25.6 in.)
- Weight: approx. 57 kg (126 lbs.)

- For 5631 Book Cradle
- Sturdy steel tube construction
- Matt-grey, plastic-laminated base board 86 x 3.2 x 60 cm (33.9 x 1.3 x 23.6 in.)
- Can be equipped with casters or height-adjustable feet
- Also suitable as copy table for RSP Xtra (5711) and RSP Xtra autoDrive (5727) copy stands
- R1 and RD system columns can be mounted via base (optional, 4427 resp. 5625)
- Dimensions (WxD): 92 x 68 cm (36.2 x 26.8 in.)
- Height: 31 cm (12.2 in.) with casters, 25 cm (9.8 in.) with feet

- For RSP Xtra (5711) and RSP Xtra autoDrive (5727) copy stands
- Sturdy steel tube construction, lower rods with additional track rollers for sliding on the RSP Xtra (autoDrive) copy stand base
- Matt-grey, plastic-laminated base board 86 x 3.2 x 60 cm (33.9 x 1.3 x 23.6 in.)
- Four casters (two lockable)
- Dimensions (WxHxD): 92 x 49 x 68 cm (36.2 x 19.3 x 26.8 in.)
- Also suitable as a table for Book Cradle 5631
- R1 and RD system columns can be mounted via base (optional, 4427 resp. 5625)

RSP Xtra/2motion Columns

For wall fastening with wall mount 5614. For specifications see description of respective copy stands (page 19). Comes without column foot.

5709: RSP Xtra Column, with camera carrier and cable remote control

5725: RSP Xtra autoDrive Column, with camera carrier, cable remote control, control unit and control program

5708: RSP 2motion Column, with camera carrier, cable remote control and base board



Magnetic Subject Holders

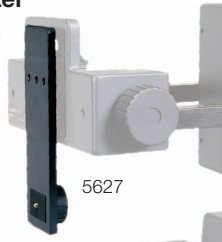
2 x 294 mm (11.6 in.) and 2 x 375 mm (14.8 in.) long, e.g. for base board of RSP 2motion.



5717

Close-Up-Adapter

Bracket to reduce the minimum camera-to-base board distance. Mounts on the camera carrier.



5627

rePRO Base

For RSP columns. Cast aluminum. Built-in spirit level.



5610

rePRO Adapter

For use of R1 system camera arms with RSP or RSD/RD copy stands / columns.



4421

rePRO Wall Mount

For mounting a RSP column (e.g. 5708, 5709, 5725) to a wall.

Lower part with base, spirit level and compartment for power supply.

Top section adjustable.

Distance wall - column: approx. 35 cm (13.8 in.)



5614

Foot Pedal Shutter Release

For triggering a camera with the foot, e.g. when the hands are used for other activities.

Dimensions foot switch: 135 x 71 x 45 mm (5.3 x 2.8 x 1.8 in.)

Cable length: 1.80 m (5.9 ft.)

Weight: 300 g (10.6 oz.)

Detailed description see page 29.



5768

Lights

RB 100D

5648

RB 570 AX

5652

Code number

Consisting of two LED lights with vertical arms
Lights can be swiveled and adjusted in height. RB 570 AX can also be shifted horizontally.

LIGHTING UNIT

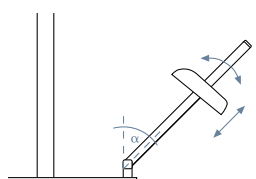
Panel lights for even illumination. Sturdy plastic housing (5648)
or solid aluminum section (5652).

Lights

2 x 504 High-CRI LEDs	2 x 272 SMD LEDs	Light source
-	●	Thermo-management*
-	●	autoDrive compatible
5600 Kelvin	5600 Kelvin	Color temperature
CRI ≥ 95	CRI = 96	Color rendition index
85°	100°	Angle of radiation
11000 / - lux	6800 / 8000 lux	Illumination with/without diffuser**
51 x 36 cm / 20.1 x 14.2 in.	58 x 16.5 cm / 22.8 x 6.5 in.	Light emitting areas
2 x 100 W	2 x ≤ 40 W	Power consumption
● / -	● / ●	Lights dimmable individually / jointly
-	●	Illuminated display
built-in diffuser	●	Detachable diffuser
-	as an accessory (5641)	Polarizers

Steel tube with square cross section. With scale. Tilt/angle adjustable by lock joint.
Mounted with clamp holders to boards up to 55 mm / 2.2 in.

Vertical arms

25 mm / 1 in.	25 mm / 1 in.	Edge dimension
0 - 90°	0 - 90°	
74.5 cm / 29.3 in.	68.5 - 83 cm. / 27 - 32.7 in.	
87 cm / 34.3 in.	87 cm / 34.3 in.	

* See page 6 for description.

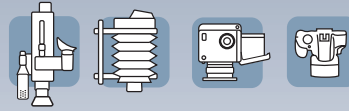
** Based on uniform illumination of a 16.5 x 11.5 in. flat subject.



KAISER
RB 570 AX
V01.00



Special Copy Stand +
Components



Wolfenbüttel Book Reflector 45N

5780



5780 with 5781
and 5608

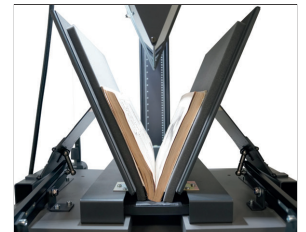
For digital reproduction of damageable historic books and documents with critical condition, especially for books that cannot be opened for more than 45°. All movements are done manually for maximum protection of the book. For books with page dimensions up to 45 x 45 cm (17.5 x 17.5 in.) and a thickness of 20 cm (7.9 in.). Covered area close to fold: approx. 4 mm.

Provisions:

- horizontally movable table
- padded book spine rest
- padded book cover rests, individually horizontally movable
- adjustment of the inclination of the side rests
- vertically movable mirror wedge with counter balance mounting and brake via bowden wire
- separate camera stand, camera carrier with 22.5° inclination and 40 cm (15 in.) travelling distance
- adjustable holding arm for camera

Functional principle:

The opened book is placed in a V-shaped book cradle. A V-shaped wedge with a glass plate on one side and a mirror on the opposite side is moved manually into the book and is locked into position. The two side rests that are opened at an angle of a bit more than 45° are manually moved to the book cover at 45°. The glass plate of the wedge flattens the page that has to be reproduced. The mirror image is now digitally photographed or scanned. A suitable software will now convert the digital image into a true sided image.



Basic table: 88 x 75 x 78 cm
(34.6 x 29.5 x 30.7 in.) (WxHxD)

Total height of book reflector: 207 cm (81.5 in.)

Total height of camera stand: 200 cm (78.7 in.)

Made
in
Germany

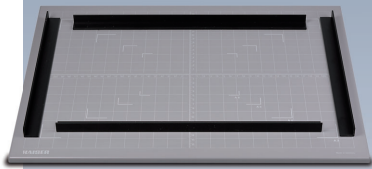
The Wolfenbüttel Book Reflector is a public private partnership development of Kaiser Fototechnik, Image Engineering Cologne and the Herzog-August Library of Wolfenbüttel, Germany.

	Adjustment Stop	Lighting Unit
Code number	5608	5781

For parallel alignment of the camera stand. Distance selectable.

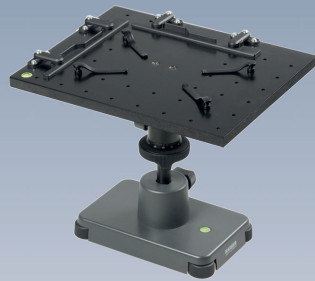
- Panel light with 272 SMD LEDs, 5600 Kelvin, CRI = 96, thermo-management, light emitting area 58 x 16.5 cm (22.8 x 6.5 in.). Sturdy aluminum housing, can be swiveled, adjusted in height and shifted horizontally. Removable soft screen.
- Vertical arm 142 cm (55.9 in.), edge dimension 25 mm (1 in.), with clamp holder, can be tilted.





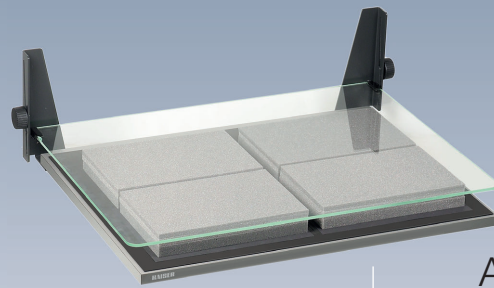
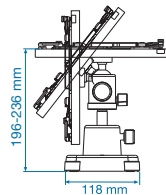
Copy Plate
5901

- For positioning and fixing flat originals
- Metal plate with non-slip bottom
- Matt gray surface with 18 % reflection
- Printed grid lines and scales
- Four permanent magnetic subject holders
- Size of printed grid area: 46 x 34 cm / 18.1 x 13.4 in.
- Total size 50 x 38 cm / 19.7 x 15 in., height: 10 mm / 0.4 in.
- Wall mounting is possible



Document Stage
5903

- Suitable for documents and originals up to 210 x 148 mm (8.3 x 5.8 in.)
- Two adjustable stop rails
- Four fixing clamps can be used in various positions
- Platform on ball head can be swivelled and tilted in all directions and pivots to 90°
- Height adjustment up to 40 mm/1.5 in.
- Spirit levels in platform and base
- Four individually adjustable feet
- Dimensions (WxHxD): 265 x 209-249 x 210 mm / 10.4 x 8.2-9.8 x 8.3 in.

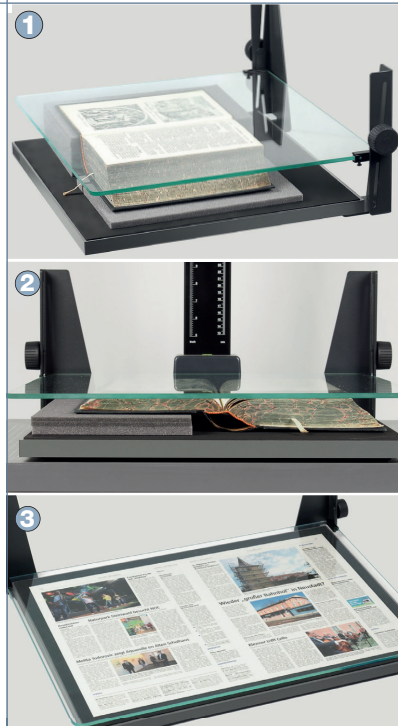


Book Holders
5771/5774

- Basic holding device for opened books of various heights ①
- Base plate with non-slip bottom
- Folding glass pressure plate, hinges variable in height up to 145 mm (5.7 in.) depending on height of book, height can be locked
- Preformed foam blocks for height compensation ②

5771 Book Holder 44/41:
With color-neutral crystal glass pressure plate. For formats up to: 44 x 41 cm (17.3 x 16.1 in.), dimensions: 53 x 22.5 x 44.5 cm (20.9 x 8.9 x 17.5 in.)

5774 Book Holder 69/50 AR:
With anti-reflective glass pressure plate. For formats up to: 69 x 50 cm (27.2 x 19.7 in.) ③, dimensions: 77 x 22.5 x 55.5 cm (30.3 x 8.9 x 21.9 in.)



Macro Focusing Stage
5535

For precise focusing.
With quick release connector (Arca-Swiss compatible) and fine adjustment handle.

Guide rail with three tripod bushes 1/4" and 3/8" each and dovetail guide (Arca-Swiss compatible).



Precision helical toothed rack. Adjustment travel 125 mm (4.9 in.), millimeter scale, slider with locking screw.

High quality aluminum section.

Square quick release plate, connection thread 1/4".

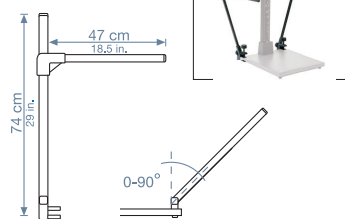
2 focusing stages 5535 can be combined to a cross-slide system.

Accessory: additional quick release plate (5536).



Lamp Arms
5560

Adjustable in height and angle. Clamp attachment on boards up to 48 mm (1.9 in.). Edge dimension: 16 mm (0.6 in.). Complete set of 2 for both sides.



Flash/Light Fixture
5571

For fastening flashguns or lights with standard accessory foot or 1/4" mounting thread on lamp arms of 16 mm/0.6 in. edge dimensions. 1 piece.



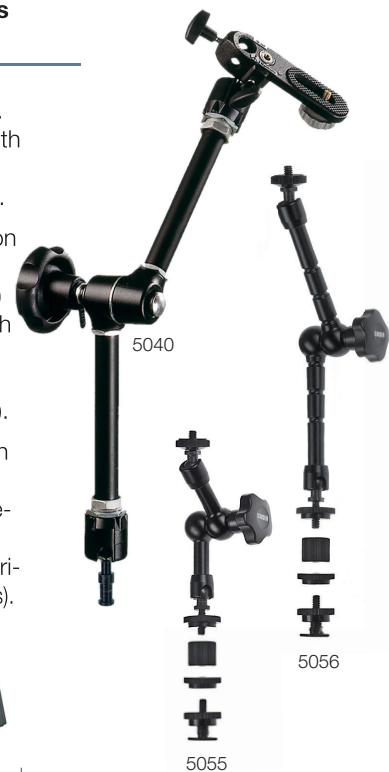
"Magic Arm" Hinged Brackets
5055-56, 5040

To mount and individually align cameras, lights and accessories. With ball-and-socket joints at both ends. Central locking disk for all three joints. Sturdy metal design.

5055-56: 1/4" camera connection thread. Includes comprehensive adapter set. Max. load 1 kg (2.2 lbs.) in horizontal position. Total length approx. 18 cm (7.1 in.) (5055, Magic Arm mini 1) resp. 28 cm (11 in.) (5056, Magic Arm mini 2).

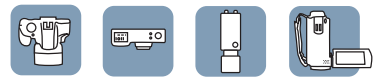
5040: 16 mm standard spigot on both ball-and-socket joints with 1/4" and 3/8" internal thread. Detachable mounting platform with umbrella mount. Max. load in horizontal position approx. 3 kg (6.6 lbs.). Total length approx. 53 cm (20.9 in.).

Mounting e.g. to Vertical Stand.



5056 with LED light





KAISER R2

**Compact,
Flexible, Stable**

Copy stands and lighting units of the R2 family are lighter versions of the R1 system. Designed for light-weight cameras, their dimensions and stability is ideal for copy work.

The stands are excellent for compact cameras and lightweight system cameras, but also suitable for industrial and professional applications.

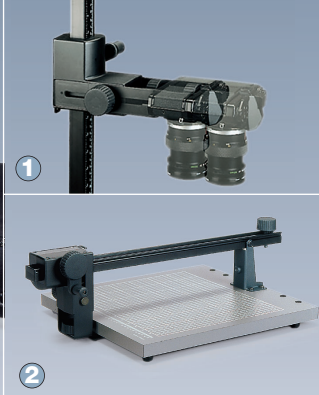
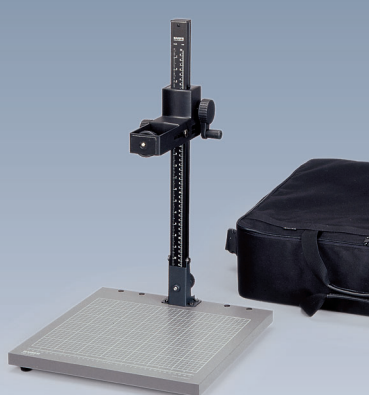
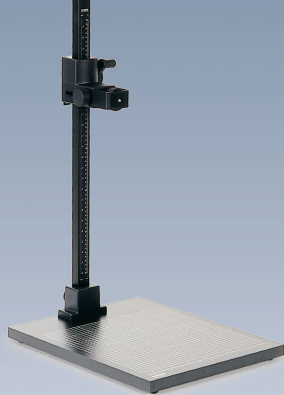
There is also a range of suitable lighting units: with recent LED light or with high-frequency fluorescents.



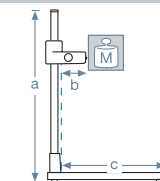
Made in Germany

KAISER R2 System

Stands



	RS 2 XA	RS 2 CP
Code number	5411	5301
Base Board	Matt gray, printed fine grid, cm and inch scale, 25 mm / 1 in. thick.	
■ Dimensions	40 x 50 cm / 15.7 x 19.7 in.	40 x 42 cm / 15.7 x 16.5 in.
■ Base	Cast aluminum	Steel panel
Column	Matt black anodized aluminum section tube, 35 mm / 1.4 in. wide, cm and inch scales, hand crank for height adjustment.	
■ Height	76 cm / 29.9 in.	60 cm / 23.6 in.
■ Foldable ②	-	●
■ Camera arm	Horizontally adjustable ①, setting range 7 cm / 2.8 in., connecting thread 1/4".	
■ Scope of supply	Copy stand	Copy stand, carrying case



	5411	5301
a	79.5 cm / 31.3 in.	64 cm / 25.2 in.
b	12.5-19.5cm / 4.9-7.7 in.	12.5-19.5cm / 4.9-7.7 in.
c	44.5 cm / 17.5 in.	37 cm / 14.6 in.
M	1.5 kg / 3.3 lbs.	1.5 kg / 3.3 lbs.

Lights



	RB 5020 DS	RB 218N HF
Code number	5467	5464

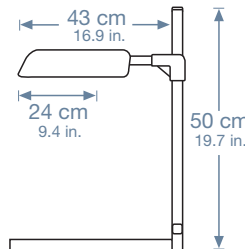
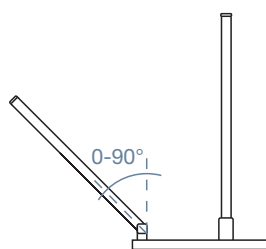
LIGHTING UNIT		Consists of lights and vertical arms.	
Lights	2 light banks		
■ Lamp type	SMD LEDs, CRI>93	Compact fluorescent lamps, CRI=90-100	
■ Lamps	2 x 105 LEDs	2 x 18 W	
■ Color temperature	6000 Kelvin	5400 Kelvin	
■ Dimmable	●	-	
■ High-frequency operation	DC	●	
■ Diffuser	removable fabric diffuser	as an accessory (code number: 5466)	
Vertical Arms	Steel tube with square cross section, edge dimension 16 mm / 0.6 in.		
■ Attachment	With clamp holders on boards up to 48 mm / 1.9 in. thick.		
■ Tilt/angle adjustable	●	●	
■ Height continuously adjustable	●	●	
■ Lights can be swiveled	●	●	

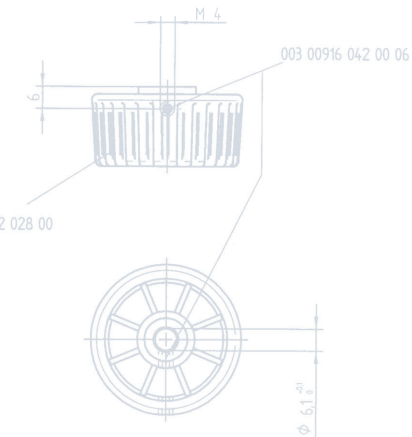
Image Capturing Set R2N CP

Code number: 5304

Comprises RS 2 CP (5301) copy stand and RB 218N HF (5464) lighting unit.

5301 and 5304 in padded carrying case (67 x 47 x 23 cm / 26.4 x 18.5 x 9.1 in.) with handle and shoulder strap.





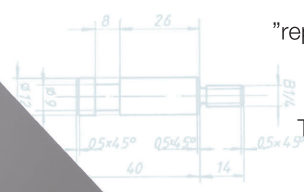
Made in Germany

KAISER "reprokid"

- the "Desktop"-Stand

"reprokid" is a small, lightweight, compact stand for small, lightweight, compact cameras and smartphones. This unit is "good enough" for wherever the requirement is for minimum space and light weight.

This stand is available with lighting unit for photofloods or without surface lighting unit, then for use with desktop lights.



Copy Stand with Base Board and Column

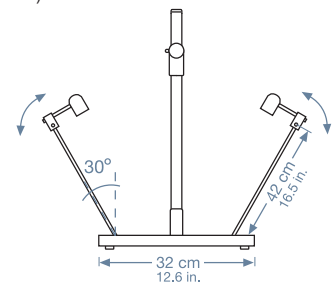
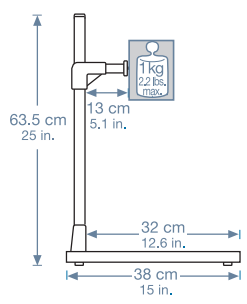


Copy Stand with Base Board, Column and Lighting Unit



PL24 Vario 2Kit Desktop Lighting Kit

Code number	5361	5360	5852
	Base board: Matt gray, 32 x 38 cm (12.6 x 15 in.), 19 mm (0.75 in.) thick. Column: 59 cm (23.2 in.) high, with cm and inch scales, height-adjustable camera arm with locking knob, 1/4" connecting thread.	Base board: Matt gray, 32 x 38 cm (12.6 x 15 in.), 19 mm (0.75 in.) thick. Column: 59 cm (23.2 in.) high, with cm and inch scales, height-adjustable camera arm with locking knob, 1/4" connecting thread. Lighting unit: Round rods, with two tiltable E27 lamp sockets for photofloods 2 x 250 W max. (not included).	With two panel lights: each with 240 SMD LEDs, variable color temperature 3200 - 5600 Kelvin, CRI: 97, angle of radiation: 80°, continuously dimmable, panel size: 14.7 x 21.4 cm (5.8 x 8.4 in.), specially structured diffuser screen, swivel joint. With height adjustable desktop stands with round base for stable stand with low space requirement.



Smartphone Mount

Rubberized quick clamp with 55 - 90 mm (2.2 - 3.5 in.) span width.
Three 1/4" tripod threads for universal application.



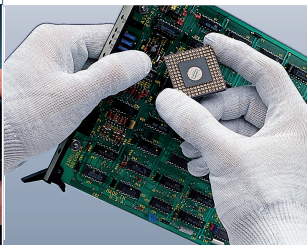
6015



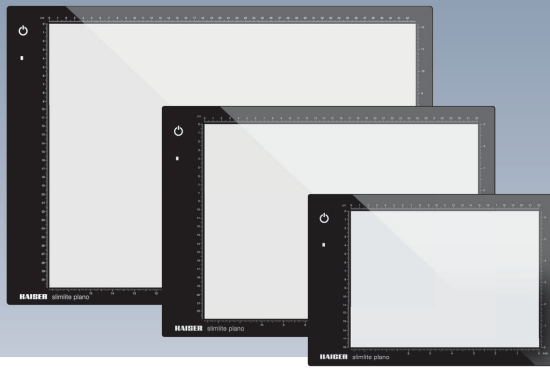
KR90 LED Ring Light	Slide Duplicator	Silicone Blower Bellows	"Clear Gear" Compressed Gas Cleaner	
3250	6506	6304/6306	6308/6310	Code number
<ul style="list-style-type: none"> Professional ring light with 30 three-chip high-performance LEDs, approx. 5500 K. Wide angle of radiation (110°), minimum working distance is only 3 cm (1.2 in.). Illuminance at 30 cm (11.8 in.) approx. 2100 lux. Lithium ion battery with deep discharge protection, operating time at full illumination approx. 3 hours. No illuminance drop-off due to battery consumption. Highly durable duralumin housing with 77 mm connecting thread and 1/4" tripod thread. Includes adapter rings from 52 to 72 mm, quick charger and car charger cable. 	<ul style="list-style-type: none"> For photographing slides and negatives with cameras with front lens thread. Attaches to the filter thread of the lens. 52 mm connecting thread. 58 mm adapter ring included. Adapter rings for other filter thread sizes available as accessories. Detachable achromatic 10 dioptre macro lens, can also be used separately. 80-120 mm lens (based on full-frame sensor) is required to achieve full size copies, larger frames require higher focal length. Includes holder for two 35 mm slides up to a mount thickness of 3 mm. Film strip carrier for six 35 mm negatives available as an accessory (6507). 	<ul style="list-style-type: none"> For contact-free, gentle cleaning of sensitive surfaces, even in hard-to-reach areas. Strong blowing effect. Stable air nozzle with soft tip to protect the surface. Rear air duct valve. Easy handling due to dimensionally stable, permanently elastic, ageing-resistant and abrasion-proof silicone bellows. With flat base. <p>6304: "Compact" 128 mm (5 in.) / ø 47 mm (1.9 in.)</p> <p>6306: "Typhoon Swing" Tiltable air nozzle and suction foot. 182 mm (7.2 in.) / ø 64 mm (2.5 in.)</p>	<p>For touch-free dust removal. Propane/butane mixture.</p> <p>6308: 200 ml 6310: 400 ml, special high pressure version</p>	



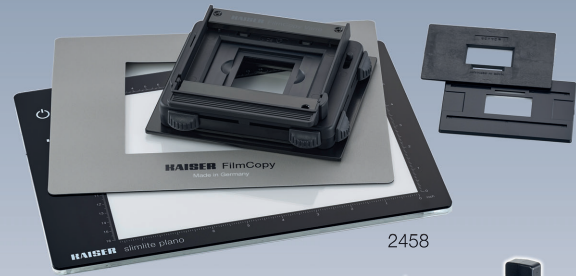
Cleaning Sets	Cleaning Brushes	SpeckGRABBER	Gloves
<p>Cleaning sets are available in many different combinations. See our website for more products.</p>	<p>Antistatic brushes, clean and discharge static charges. Mixture of natural fibres and conductive synthetic fibres. Can be rinsed out. Sizes (width): 20, 30, 60, 100 mm (0.8, 1.2, 2.4, 3.9 in.).</p>	<p>Removes individual particles of dust and dirt from sensitive surfaces without damaging them or leaving any residues on them.</p> <p>For camera sensors, SRL mirrors, lenses, oculars, films, slides, etc.</p>	<p>Cotton gloves, washable at all temperatures, sizes L (standard) and XL.</p> <p>Antistatic gloves, made of soft micro fibre, with conductive fibres interwoven. Discharge static charges and preventing dust attracting electrostatic charges.</p>
<p>Antistatic Clothes</p>	<p>Anti-Static Film Cleaner</p>	<p>Tip with high adhesive strength. Can be cleaned without affecting its adhesive strength.</p> <p>Available with standard handle or with rubber-coated handle.</p>	<p>Lint-free, washable.</p>
<p>Microfibre clothes with antistatic provisions. Different sizes.</p>	<p>With two anti-static brushes in a solid steel frame, for cleaning both sides of films and originals at the same time. Sizes (width): 35, 70, 100 mm (1.4, 2.8, 3.9 in.).</p>		



Light Boxes Transmitted Light Sources



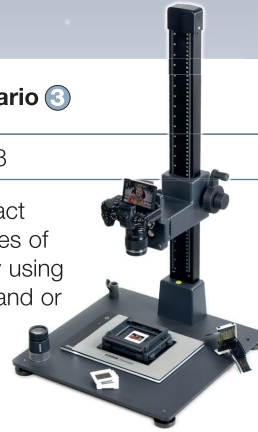
slimlite plano ①



FilmCopy Vario ③

Code number	2453	2454	2455
Light source	23 LEDs	33 LEDs	90 LEDs
Illuminated area	22 x 16 cm	32 x 22.8 cm	42.9 x 30.9 cm
Color temperature	5000 Kelvin		
Color rendition index	CRI: 95		
Luminous density	750 cd/m ²	600 cd/m ²	650 cd/m ²
Dimmable	with touch switch		
DC operation*	●		
Battery operation	●		
Mains operation	●		
Outside dimensions	29 x 20 x 0.8 cm 11.4 x 7.9 x 0.3 in.	39 x 27 x 0.8 cm 15.4 x 10.6 x 0.3 in.	50 x 35 x 0.8 cm 19.7 x 13.8 x 0.3 in.

Stable holding device for the exact positioning of slides and negatives of various formats. For digitizing by using a camera mounted to a copy stand or tripod. To use on light boxes.



Incl. insert for 35 mm slides in 5 x 5 cm mounts, 24 x 36 mm format masks and overlay mat.

Optional accessories: format masks / glass inserts for film strips and cut single slides and negatives 4.5 x 6 cm to 6 x 9 cm and 24 x 66 mm panoramic film format.

2457 FilmCopy Vario
2458 FilmCopy Vario Kit: 2457 and Light Box 2453

* no mains frequency flicker



prolite LED 37/25

prolite LED 50/37



prolite scan SC

Code number	2479	2480
Light source	135 SMD LEDs	270 SMD LEDs
Illuminated area	37 x 25 cm / 14.6 x 9.8 in.	50 x 37 cm / 19.7 x 14.6 in.
Color temperature	approx. 6000 Kelvin	
Color rendition index	CRI: 95	
Luminous density	9400 cd/m ²	10000 cd/m ²
Dimmable	●	
DC operation* / HF*	DC operation	
Special features	6 mm T-slot on all four side sections ②, swivel bracket as optional accessory	
Mains operation	●	
Outside dimensions	44 x 34.5 x 5.5 cm 17.3 x 13.6 x 2.2 in.	59.5 x 44 x 5.5 cm 23.4 x 17.3 x 2.2 in.

Code number	2492	2493
Light source	4 x 55 W Dulux	
Illuminated area	48 x 44 cm / 18.9 x 17.3 in.	
Color temperature	5000 Kelvin	
Color rendition index	CRI: 90-100	
Luminous density	13000 cd/m ²	
Dimmable	-	●
DC operation* / HF*	high frequency operation	
Special features	operation-hour counter ④, fan cooling	
Mains operation	●	
Outside dimensions	63 x 54 x 9 cm 24.8 x 21.3 x 3.5 in.	

* no mains frequency flicker



①

②

2453-55



③



④

2493

Camera Shutter Releases



Foot Pedal Shutter Release	MonoCR	MultiTrig AS 5.1	
5768	6187-96	7001	Code number
Cable remote control	Cable remote control	Radio Trigger / Cable Remote Control Transmitter/receiver set	
●	●	●	Cable controlled <input type="checkbox"/>
-	-	●	Radio controlled <input type="checkbox"/>
-	●	●	Half shutter <input type="checkbox"/>
●	●	●	Bulb shot <input type="checkbox"/>
●	●	●	Single button operation <input type="checkbox"/>
-	-	●	Controll LED <input type="checkbox"/>
Foot switch with cast aluminum housing, IP54	Color marking for bulb shot	Also suitable as a radio trigger for shoe-mount flashes and studio flashes	Special features <input type="checkbox"/>

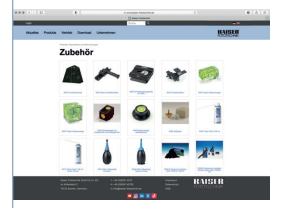
For Canon, Fujifilm, Leica, Minolta, Nikon, Panasonic, Pentax, Samsung, Sigma, Sony, Olympus.
Shutter release cords may still be required. Extension cable 6185 as optional accessory.
See www.kaiser-fototechnik.com for current compatibility lists.



Loupe Spirit Levels

All-Purpose Magnifier 4.5 x	Wasserwaagen			
2351	6386	6387	6393	Code number
Base magnifier for reflected and transmitted light originals. With high-quality lens made of optical glass. Sharp, distortion-free image up to the edges. Eyesight correction from +1 to -2.5 for individual adjustment to one's own visual acuity. Light-weight, sturdy plastic housing. Translucent base. Magnification: 4.5-fold Lens: ø 35 mm (1.4 in.) Viewing field: ø 45 mm (suitable for 35 mm slides) Height: 70 mm (2.8 in.) Weight: 56 g (2 oz.)	Circular bubble, self-adhesive. For permanent attachment to cameras, tripods etc. Can also be screwed on. Aluminum housing, black anodized. Diameter: approx. 25 mm (1 in.)	Duplex Spirit Level. With twin levels and mounting feet for landscape and portrait position. Transparent housing. Attaches to the camera's accessory shoe. 6385 With twin levels for landscape and portrait position. With mounting shoe and 1/4" tripod bush.	Triplex Spirit Level. With three levels. Two-level horizontal alignment for landscape and portrait shots without repositioning the spirit level. Transparent housing. Attaches to the camera's accessory shoe.	

Visit our website at www.kaiser-fototechnik.com for more accessories.



Important Specifications at a Glance



Copy Stands

	Type	Code no.	Column height or height (cm/in.)	Base board or illuminated area (i.a.) (cm/in.)	Original width ¹⁾ (cm/in.) for focal length of lens ²⁾		Recommended lighting units
					50 mm	100 mm	
R1	RSX	5512	120 / 47.2	60x50 / 23.6x19.7	66 / 26.0	33 / 13.0	} 5640, 5547, 5545, 5550, 5596
	RS 10	5513	100 / 39.4	60x50 / 23.6x19.7	53 / 20.9	27 / 10.6	
	RS 1	5510	100 / 39.4	45x50 / 17.7x19.7	53 / 20.9	27 / 10.6	
	RS 1	5511	100 / 39.4	45x50 / 17.7x19.7	53 / 20.9	27 / 10.6	
	RS 1 microdrive	5507	100 / 39.4	45x50 / 17.7x19.7	53 / 20.9	27 / 10.6	
	Vertical Stand	5504/4407	80 / 31.5	45x45 / 17.7x17.7	42 / 16.5	21 / 8.3	3482, 5467
		5504/4475	100 / 39.4	45x45 / 17.7x17.7	53 / 20.9	27 / 10.6	3482, 5467
Copolyzer	Copolyzer exe.cutive LED	5215	100 / 39.4	i.a. 50.6x36 / 19.9x14.2	53 / 20.9	27 / 10.6	5284, 5282, 5278
RD	RSD 1.2 / RSDmot 1.2	5602/5603	120 / 47.2	68x57 / 26.8x22.4	60 / 23.6	30 / 11.8	5640, 5547, 5545, 5550, 5596
	RSDmot 1.8	5600	180 / 70.9	90x73 / 35.4x28.7	104 / 41.0	52 / 20.5	5640, 5652, 5648
rePRO	RSP (autoDrive) 1.5	5612/5613 with 5615 or with 5618 and 5616 or 5617	150 / 59.1 66 / 26.0 75 / 29.5	80x60 / 31.5x23.6 i.a. 48x43/18.9x17.0	88 / 34.6	44 / 17.3	} 5652, 5648
	RSP Xtra (autoDrive)	5711/5727 with 5712 with 5630	216 / 85.0 49 / 19.3 31 / 12.2	86x60 / 33.9x23.6 86x60 / 33.9x23.6	100 / 39.4 112 / 44.1	50 / 19.7 56 / 22.1	
	RSP 2motion	5710	216 / 85.0	129x89 / 50.8x35.0	100 / 39.4	50 / 19.7	
R2	RS 2 XA	5411	76 / 29.9	40x50 / 15.7x19.7	38 / 15.0	19 / 7.5	5464, 5467, 5596
	RS 2 CP	5301	60 / 23.6	40x42 / 15.7x16.5	29 / 11.4	15 / 5.9	5464, 5467
	R2N CP	5304	60 / 23.6	40x42 / 15.7x16.5	29 / 11.4	15 / 5.9	included
reprokid	reprokid	5361	59 / 23.2	32x38 / 12.6x15.0	33 / 13.0	16 / 6.3	5852
		5360	59 / 23.2	32x38 / 12.6x15.0	33 / 13.0	16 / 6.3	included

1) at maximum height

2) focal length is related to full frame

Lighting Units

Type	Code no.	Power (watt)	Color temp. (Kelvin)	Illuminance ¹⁾ (lux)	Time/aperture ²⁾	Recommended copy stands	
RB 560 AL	5640	2 x ≤ 40	5600	8000	1/30	5512, 5513, 5510, 5511, 5507 5504 with 4407/4475	R1
RB 555 AS	5547	2 x ≤ 28	5600	5200	1/15		
RB 551 AB	5545	2 x ≤ 28	5600	5200	1/15		
RB 5070 DX2	5550	2 x 27	6000	3000	1/15		
RB 5970 UV	5596	2 x 9	UV-A, 365 nm wave length				
RB 5020 DS2	5467	2 x 17	6000	2000	1/8		
RB 525 AS	5284	2 x ≤ 28	5600	5200	1/15	5215	Copolyzer
RB 521 AB	5282	2 x ≤ 28	5600	5200	1/15	5215	
RB 5270 DX	5278	2 x 27	6000	3000	1/15	5215	
RB 560 AL	5640	2 x ≤ 40	5600	8000	1/30	5600, 5602, 5603 5602, 5603 5600 5600	RD
RB 555 AS	5547	2 x ≤ 28	5600	5200	1/15		
RB 551 AB	5545	2 x ≤ 28	5600	5200	1/15		
RB 5070 DX2	5550	2 x 27	6000	3000	1/15		
RB 5970 UV	5596	2 x 9	UV-A, 365 nm wave length				
RB 570 AX	5652	2 x ≤ 40	5600	8000	1/30		
RB 100D	5648	2 x 100	5600	11000	1/60		
RB 570 AX	5652	2 x ≤ 40	5600	8000	1/30	5612/5613 with 5615 or 5618; 5710; 5711/5727 with 5712 or 5630	rePRO
RB 100D	5648	2 x 100	5600	11000	1/60		
RB 218N HF	5464	2 x 18	5400	1160	1/4	5301, 5411	R2
RB 5020 DS2	5467	2 x 17	6000	4300	1/15	5301, 5411	
R2N CP	5304	2 x 18	5400	1160	1/4	included	
RB 5970 UV	5596	2 x 9	UV-A, 365 nm wave length			5411	
reprokid	5360	2 x 150 ³⁾	3200	14000	1/60	included	reprokid
PL24 Vario 2Kit	5852	2 x 24	3200-5600	4150	1/15	5361	

¹⁾ measured with highest possible evenness of illumination in consideration of the adjustability on the vertical arms to the subject surface;
reference surface: tabloid format, R2 system and reprokid: letter format

²⁾ approx. exposure time in seconds at f=8

³⁾ reflector lamp 3128, optional accessory

Kaiser Fototechnik offers even more possibilities for your image capturing jobs, for example with the “easy-fit” and “TopTable XL Vario” shooting tables.



Kaiser “easy-fit”



Kaiser “TopTable XL Vario”



The comprehensive range of Kaiser products can be found on our website www.kaiser-fototechnik.com. Click on the English language version and navigate to “Products”.



Lighting equipment and lamps as described in this brochure are marketed for the purpose of illumination for image capture and not for use in other applications.



Instagram



YouTube



Follow us on:

LinkedIn



TikTok



facebook



KAISER[®]
FOTOTECHNIK

Kaiser Fototechnik GmbH & Co. KG
Im Krötensteich 2 · 74722 Buchen · Germany
Tel.: +49(0)6281 4070
www.kaiser-fototechnik.de
info@kaiser-fototechnik.de
WEEE-Rg. -Nr. DE 34742207

USA
MAC Group
75 Virginia Road,
North White Plains, NY 10603
Tel +1 914 3473300
Fax +1 914 3473309
info@kaiserfotous.com
www.kaiserfotous.com

Australia
Specular Pty Ltd.
Sydney Showroom:
Suite 18, 112 McEvoy Street
NSW 2015 Alexandria
Tel +61 2 79223833
kaiser@specular.com.au
www.specular.com.au

United Kingdom
Jay House LTD Fotospeed
Lower Beversbrook IND EST
Redman Road
SN11 9PL Calne
Tel +44 1249 714 555
Fax +44 1249 714 999
info@fotospeed.com
www.fotospeed.com

Canada
B3K Digital
163 Queen St. E., Suite 100
M5A 1 S1 Toronto
Ontario
+1 416 628 8044
info@b3kdigital.com
www.b3kdigital.com