

ARTIFEX



Artifex alfa
USER MANUAL

Dear Customer, thank you!

you made a great choice shopping with us. Thank you for your purchase. We truly care about our customer. If you have any issue at all with your device, we all work with you until you'll be happy. Please contact us at: tecnica@puntofoto.eu

Your Artifex Beta model has been mainly designed for the 4"x5" sheets .

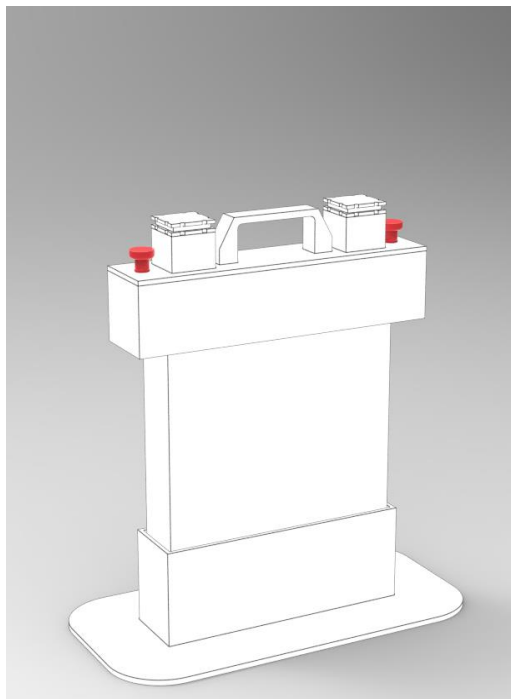
Our main idea was to design an easy to use tool, sturdy and absolutely safe for processing your images, but we also worried about the environment.

It can be used for developing until six film sheets with only 0,5 liters of developer, and in case you'll need to develop less than six sheets, we had the idea to design the filler, it reduces the inner volume from 500 ml down to just 300 ml , by using two of them for two film sheets.

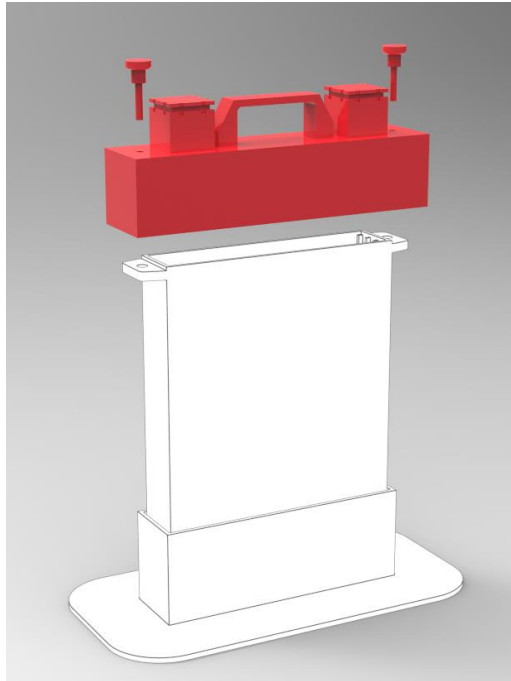
Worldwide distribution: Punto Foto Group by KARL BIELSER s.a.s. – tecnica@puntofoto.eu
Via Aristotele, 67 – 20128 Milano – Italy

The following is a list of suggestions for the best use.

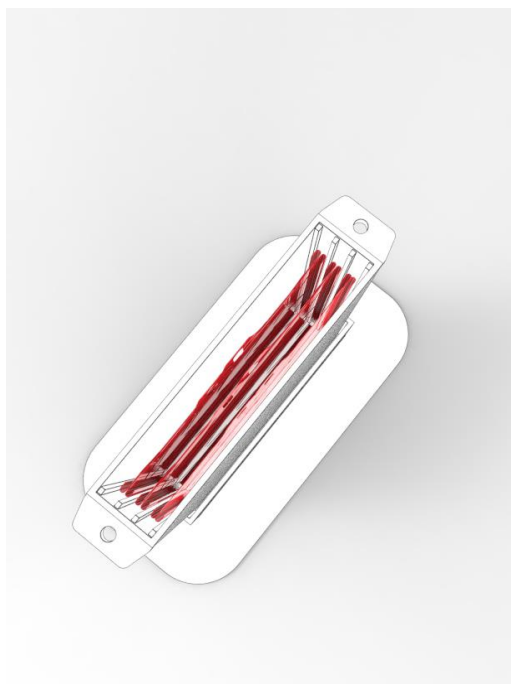
Open the tank by unscrewing the two threaded knobs at the top of the tank



Take off the top (tank part A)



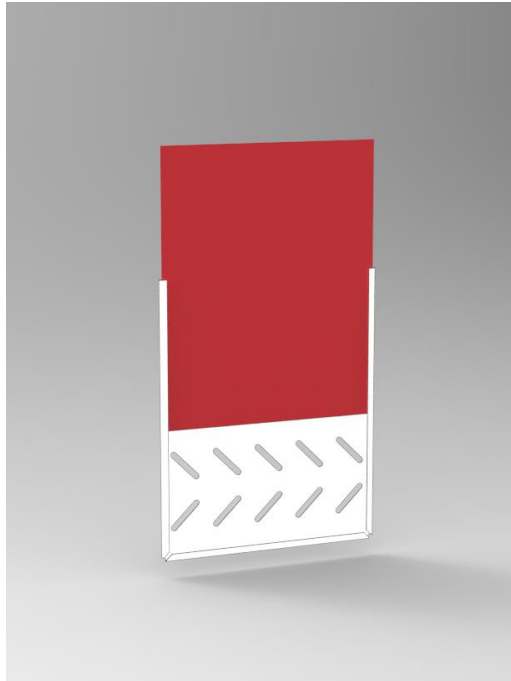
now you can see the six film holders.



Take them off

Place the tank (tank part B) inside the dedicated base (optional) for working in the best and safety way.

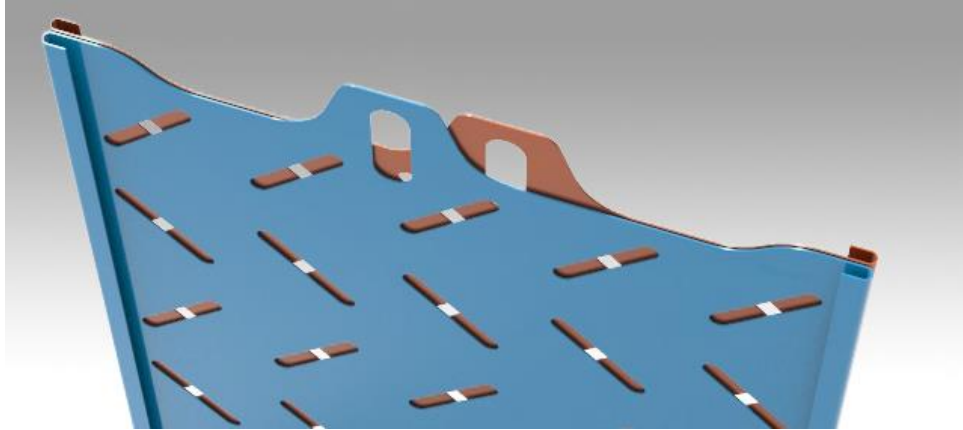
In total dark, insert one exposed film in any film holder with the sensitized side facing the outside, then insert it in one of the three guides



It's advisable to place the film holders inside one external guide first, and also to use the guide-lock during this operation. (only for Beta 8x10")



Any couple of frames must be positioned in a single guide .
They will be in contact with the back side

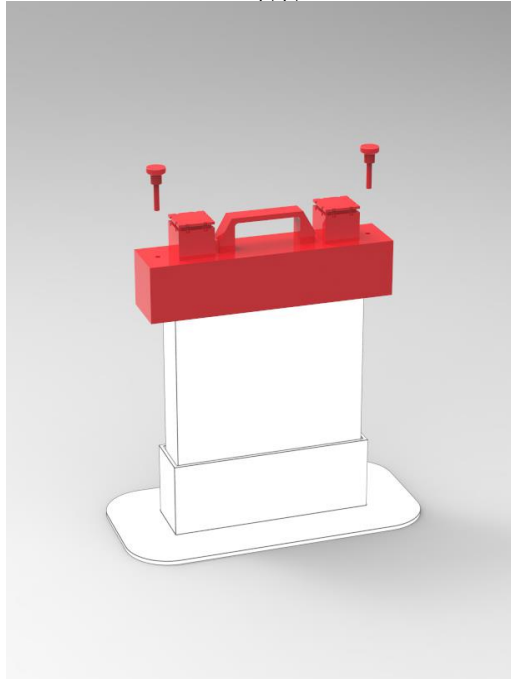


Do the same for all the film sheets you want to develop
Insert the frames inside the lower part of the tank (tank part B)

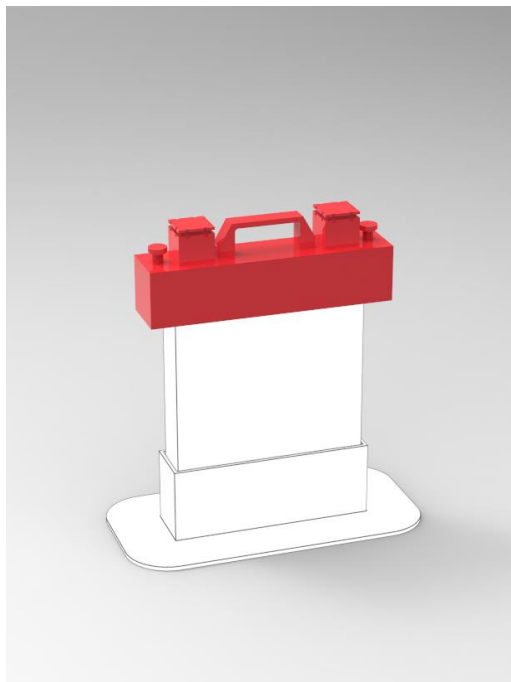


Now you can close the tank by placing the top (tank part A) over the tank part B

Close the tank with screw-knobs. It is not necessary to over-tighten the locking knobs, also to avoid excessive stress on the sealing gasket



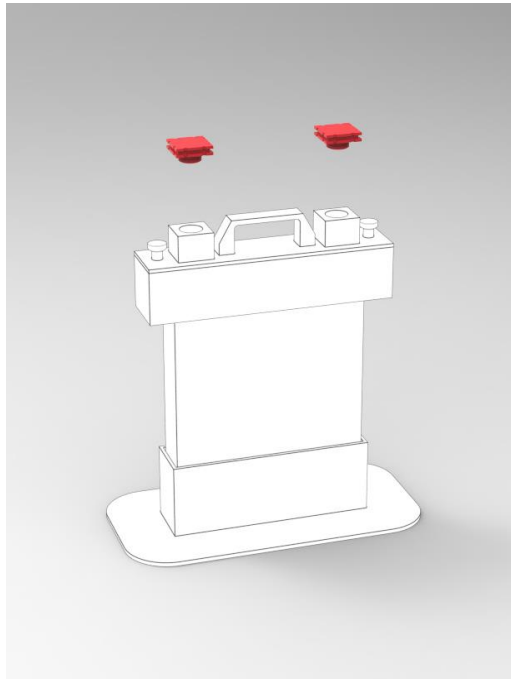
Screw the two threaded knobs for sealing the tank.



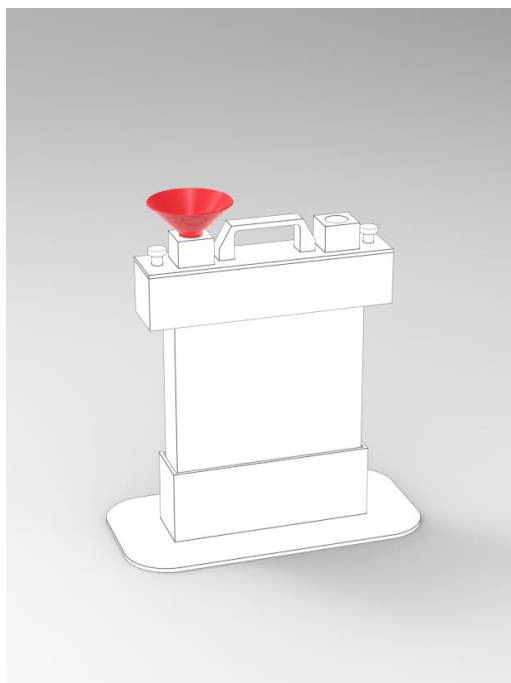
Now your tank is ready for use and you can turn on the light.

It's advisable a first bath with only water. It must last about 120 seconds.

Remove the two caps for opening the two inlet/outlet tubes.



Pour the developer by using a funnel with a suitable diameter and then close them.
It's important that OR seals must be always wet when you close the inlet/outlet tubes.

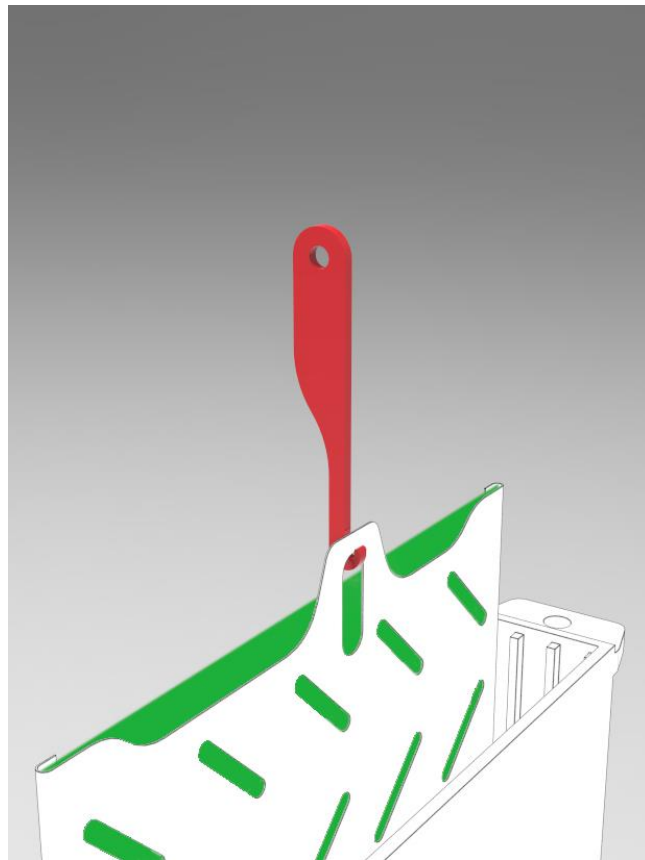


Follow the desired process based on your desires, film, sensitivity and developer.

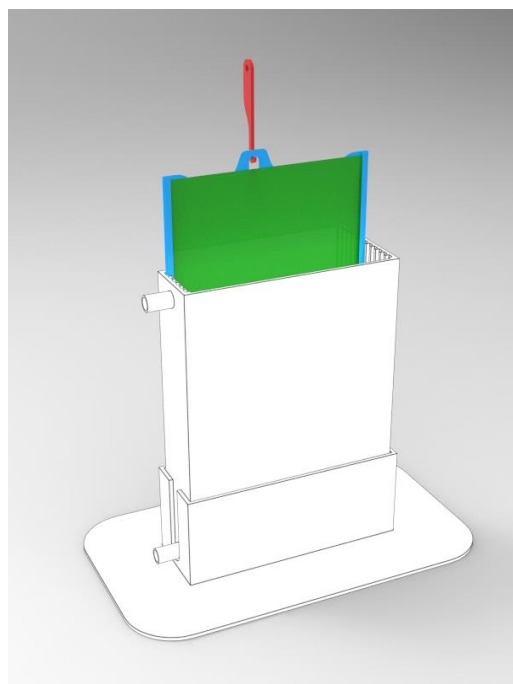
The development is performed with three baths: development, stop and fixation. The fourth is washing using running water.

Now you can open the tank.

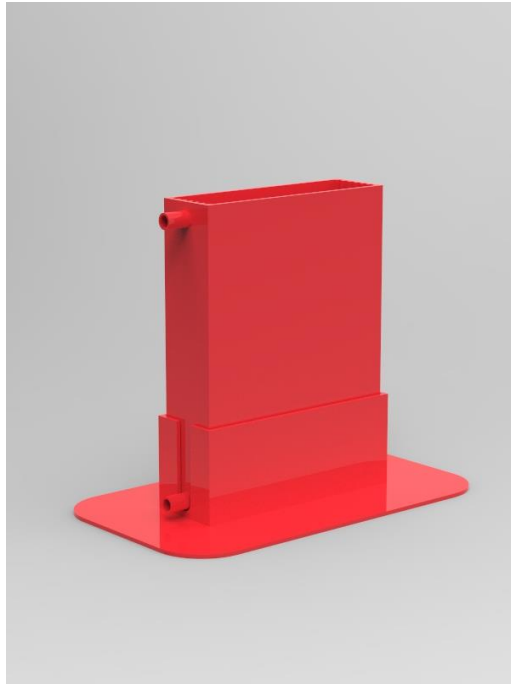
Pull out each frame form the tank by using the hook.



Bring them and insert in our washing tank (optional) along the guides.
Washing time is about thirty minutes



Warning: it could happen that some areas of anti-halo layer could still be visible at the end of process. It's not a problem. It will dissolve during the washing of film.



The washing tank *only for 8x10"*

Hook frames again one by one by using our stainless-steel hook and, when it's half in the water, keep the film and slowly, extract each it from the frame.

Wash the tank and all the components before storage

Place frames in the dedicated frame dryer (optional on for 8x10").

